

APPENDIX A

Wetland Catalogue and Codes

Key to Catalogue

Numeric ID :	Unique identifier for each wetland referenced in report, maps and database
Wetland Name or Nearest Town:	Names derived from existing maps and literature often applicable to more than one wetland
Administrative District:	One of nine administrative districts in Mauritius
Map No.	Location of wetland to Sheet No. of 1:25k Map of Mauritius

A. COASTAL MARSHLANDS

FINAL NO.	Name or Nearest Town	Administrative District	Map no.
1	Grand Baie - Palais de Congres	Riviere du Rempart	1
2	Grand Baie - Mare Michaux N	Riviere du Rempart	1
3	Grand Baie - Mare Michaux S	Riviere du Rempart	1
4	Grand Baie - Mare Michaux C	Riviere du Rempart	1
5	Grand Baie - Mare Soyfoo S	Riviere du Rempart	1
6	Grand Baie - Mare Soyfoo N	Riviere du Rempart	1
7	Grand Baie - Grand Mare Longue SW	Riviere du Rempart	1
8	Grand Baie - Grand Mare Longue W	Riviere du Rempart	1
9	Grand Baie - Super U	Riviere du Rempart	1
10	Grand Baie - Grand Mare Longue SE	Riviere du Rempart	1
11	Grand Baie - Grand Mare Longue Central	Riviere du Rempart	1
12	Grand Baie - Grand Mare Longue N	Riviere du Rempart	1
13	Pereybere	Riviere du Rempart	1
14	Pereybere	Riviere du Rempart	1
15	Pereybere	Riviere du Rempart	1
16	Pereybere	Riviere du Rempart	1
17	Pereybere	Riviere du Rempart	1
18	Pereybere	Riviere du Rempart	1
19	Pereybere	Riviere du Rempart	1
20	Pereybere	Riviere du Rempart	1
21	Pereybere	Riviere du Rempart	1
22	Cap Malheureux - Mare Phedre	Riviere du Rempart	1
23	Cap Malheureux	Riviere du Rempart	1
24	Cap Malheureux - Mare Campave	Riviere du Rempart	1
25	Cap Malheureux	Riviere du Rempart	1
26	Cap Malheureux	Riviere du Rempart	1
27	Cap Malheureux	Riviere du Rempart	1
28	Bois de Oiseaux/Bassin Humbert	Riviere du Rempart	2
29	Bois de Oiseaux/Bassin Humbert	Riviere du Rempart	2
30	Anse La Raie	Riviere du Rempart	2
31	Anse La Raie (near barachois)	Riviere du Rempart	2
32	Cap Malheureux	Riviere du Rempart	2
33	Cap Malheureux	Riviere du Rempart	1
34	Anse La Raie	Riviere du Rempart	2
35	Point des Lascars 3 N	Flacq	2
36	Poste Lafayette1 (nr Mare Sarcelle)	Flacq	6
37	Poste Lafayette2(nr Mare Sarcelle)	Flacq	6
38	Pointe Radeau 1- Forest Service station	Flacq	6
39	Pointe Radeau 2	Flacq	6
40	Choisy Barachois	Flacq	6
41	Roches Noires/ Pt. des Roche Noire	Riviere du Rempart	2
42	Choisy Large	Flacq	6
43	Providence	Flacq	6
44	Belle Mare Legend Golf Course Hole 1	Flacq	6
45	Mare de la Montagne Gourmand - Legend GC	Flacq	6
46	Mare de la Montagne Gourmand - Legend GC	Flacq	6
47	Mare de la Montagne Gourmand - Legend GC	Flacq	6
48	Mare de la Montagne Gourmand - Legend GC	Flacq	6
49	Mare de la Montagne Gourmand - Legend GC	Flacq	6
50	Mare de la Montagne Gourmand - Legend GC	Flacq	6

COASTAL MARSHLANDS (Continued)

51	Mare de la Montagne Gourmand - Legend GC	Flacq	6
52	Mare de la Montagne Gourmand - Legend GC	Flacq	6
53	Belle Mare Legend Golf Course Hole 11a	Flacq	6
54	Belle Mare Legend Golf Course Hole 11b	Flacq	6
55	Belle Mare Legend Golf Course Hole 11c	Flacq	6
56	Belle Mare Legend Golf Course Hole 8a	Flacq	6
57	Belle Mare Legend Golf Course Hole 8b	Flacq	6
58	Mare de la Montagne Gourmand - Legend GC	Flacq	6
59	Belle Mare Legend Golf Course Hole 8	Flacq	6
60	Belle Mare Legend Golf Course Hole 7	Flacq	6
61	Mare Rond	Flacq	6
62	Belle Mare Legend Golf Course Hole 9	Flacq	6
63	Belle Mare Legend Golf Course Hole 10	Flacq	6
64	Mare Joeffret - Legend GC	Flacq	6
65	Mare Rond - Legend GC	Flacq	6
66	Mare Rond - Legend GC	Flacq	6
67	Mare Rond - Legend GC	Flacq	6
68	Mare Rond - Legend GC	Flacq	6
69	Mare Rond - Legend GC	Flacq	6
70	Belle Mare Legend Golf Course Hole 14a	Flacq	6
71	Belle Mare Legend Golf Course Hole 14b	Flacq	6
72	Belle Mare Legend Golf Course Hole 14c	Flacq	6
73	Belle Mare Legend Golf Course Hole 14	Flacq	6
74	Belle Mare Legend Golf Course Hole 15	Flacq	6
75	Mare Rond - Legend GC	Flacq	6
76	Les Salines 1	Black River	7
77	Les Salines 2	Black River	7
78	Palmar Crown Land - Public Beach	Flacq	6
79	Albion	Black River	3
80	Albion	Black River	3
81	Anse La Raie (nr Bassin Paquet)	Riviere du Rempart	2
82	Anse La Raie (nr Bassin Paquet)	Riviere du Rempart	2
83	Point d'Esny	Grand Port	10
84	Bel Ombre	Savanne	11
85	Bel Ombre 2	Savanne	11
86	R. Francoise/Poste de Flacq	Flacq	6
87	Fort William	Port Louis	4
89	Providence - Links GC 1	Flacq	6
90	Providence - Links GC 2	Flacq	6
91	Providence - Links GC 3	Flacq	6
92	Providence - Links GC 4	Flacq	6
93	Providence - Links GC 5	Flacq	6
94	Providence - Links GC 6	Flacq	6
95	Providence - Links GC 7	Flacq	6
96	Providence - Links GC 8	Flacq	6
97	Providence - Links GC 9	Flacq	6
99	Mare aux songe	Grand Port	13
100	Mare aux songe2	Grand Port	13

COASTAL MARSHLANDS (Continued)

101	Mare aux songe3	Grand Port	13
102	Palmar Crown Land - Belle Mare	Flacq	6
103	Providence - Links GC 10 (Bassin Riyaltz)	Flacq	6
104	Trou aux Biche - Village hotel GC	Pamplemousses	1
105	St.Martin	Savanne	11
106	Pointe Oscome	Riviere du Rempart	2
107	Pointe Oscome	Riviere du Rempart	2
108	Palmar Crown Land - E of Mare Trois Ilots 2	Flacq	6
109	Palmar Crown Land -E of Mare du Puit 2	Flacq	6
110	Pereybere	Riviere du Rempart	1
111	Pereybere	Riviere du Rempart	1
112	Mare Samson (Petit Verger)	Black River	3
113	Point aux Piments	Pamplemousses	1
114	Pointe d'Esny - Point Jerome	Grand Port	10
115	Pointe d'Esny - Pt Jerome-Hotel Preskil	Grand Port	10
116	Pointe d'Esny	Grand Port	13
117	Pointe d'Esny	Grand Port	13
118	Pointe d'Esny	Grand Port	13
119	Pointe d'Esny	Grand Port	13
120	Pointe d'Esny - Point Jerome2	Grand Port	10
121	La Prairie	Black River	11
122	La Prairie	Black River	11
123	La Prairie	Black River	11
124	Roches Noires 1	Riviere du Rempart	2
125	Roches Noires 2	Riviere du Rempart	2
126	Roches Noires 3	Riviere du Rempart	2
127	Souffleur	Grand Port	13
128	Souffleur	Grand Port	13
129	Trou aux Biche - Village hotel GC	Pamplemousses	1
130	Trou aux Biche - Village hotel GC	Pamplemousses	1
131	Trou aux Biche - Village hotel GC	Pamplemousses	1
132	Trou aux Biche - Village hotel GC	Pamplemousses	1
133	Pointe Quatre Cocos	Flacq	6
134	Wolmar- nr hotel	Black River	7
135	Wolmar -cemetery	Black River	7
136	Wolmar -cemetery	Black River	7
137	Wolmar- nr hotel	Black River	7
138	Wolmar- nr hotel	Black River	7
139	Wolmar- nr hotel	Black River	7
140	Wolmar- nr hotel	Black River	7
141	Wolmar- nr hotel	Black River	7
142	Wolmar- nr hotel	Black River	7
143	Wolmar- nr hotel	Black River	7
144	Wolmar- nr hotel	Black River	7
145	Roches Noire Salt Pan	Riviere du Rempart	2
146	Mare Sarcelle S	Flacq	2
147	Mare Tatos	Flacq	6
148	Mare Casse Ghoon	Flacq	6
151	Palmar Crown Land - Across Public Beach	Flacq	6

COASTAL MARSHLANDS (Continued)

152	Mare Planche	Flacq	6
153	Palmar Crown Land - Breeding Station 2	Flacq	6
154	Palmar Crown Land - E of Mare Tatos	Flacq	6
155	Mare du Verger	Flacq	6
156	Mare Blanche	Flacq	6
157	Mare Blanche small spur	Flacq	6
158	Mare aux Trois Ilots	Flacq	6
159	Mare du Puit	Flacq	6
160	Pereybere - catchment pond nr Vingt Pieds Rd	Riviere du Rempart	1
161	Pereybere (La Chaumiere)	Riviere du Rempart	1
162	Pereybere	Riviere du Rempart	1
164	Baudot Estate Main	Riviere du Rempart	2
165	Baudot Estate Pump Pond	Riviere du Rempart	2
168	Mare Sarcelle N	Flacq	2
172	Anahita Resort GC (Mare aux Lubines)	Flacq	6
174	Ferney	Grand Port	9
177	Point d'Esny	Grand Port	10
178	Terre Rouge Bird Sanctuary	Pamplemousses	4
179	Poste Lafayette6 (nr Mare Sarcelle)	Flacq	6
180	Poste Lafayette5 (nr Mare Sarcelle)	Flacq	6
181	Poste Lafayette4 (nr Mare Sarcelle)	Flacq	6
182	Poste Lafayette3 (nr Mare Sarcelle)	Flacq	6
183	Choisy - Hotel Constance Road	Flacq	6
184	Brasdeau Nature Trail	Flacq	6
185	Brasdeau Mare Mahogany	Flacq	6
186	Brasdeau Mare Coq de Bois	Flacq	6
187	Brasdeau Mare Chevette	Flacq	6
206	Palmar Crown Land - Breeding Station 1	Flacq	6
207	Palmar Crown Land - Breeding Station 3	Flacq	6
208	Palmar Crown Land - Breeding Station 5	Flacq	6
210	Ile Plate	Riviere du Rempart	14
211	Trou d Eau Douce lg Cremation Ground	Flacq	6
212	Trou d Eau Douce small	Flacq	6
213	Bassin Requins	Flacq	6
214	Bassin Oozeerally	Flacq	6
215	Palmar Crown Land - Breeding Station 4	Flacq	6
218	Schoenfeld	Riviere du Rempart	2
219	Belle Mare Field South	Flacq	6
220	Belle Mare Field Central	Flacq	6
221	Belle Mare Field North	Flacq	6
222	Ile d Ambre West	Riviere du Rempart	2
223	Ile D Ambre West Central	Riviere du Rempart	2
224	English Hole Ile D Ambre	Riviere du Rempart	2
225	Ile D Ambre East Central	Riviere du Rempart	2
226	Ile D Ambre East Large	Riviere du Rempart	2
227	Ile D Ambre East Small	Riviere du Rempart	2
228	Trou Bleu	Flacq	6
229	Mare Chevette East	Flacq	6
230	Mare Chevette West	Flacq	6
231	Mare Anguilles North	Flacq	6
232	Mare Anguilles South	Flacq	6
233	South Riviere Citronier	Riviere du Rempart	2
234	M. Caille Bain Boeuf	Riviere du Rempart	1
235	Pointe aux Sables	Black River	3
236	Pointe aux Sables	Black River	3
237	Pereybere Privee	Riviere du Rempart	1

B. LAKES & RESERVOIRS

FINAL NO.	Name or Nearest Town	Administrative District	Map no.
175	Dagotiere	Moka	4
188	Mare aux Vacoas - holding pond	Plaines Wilhems	8
189	Tamarin Falls	Plaines Wilhems	8
190	Piton du Milieu	Moka	9
191	Midlands Reservoir	Moka	9
192	Riche en Eau	Grand Port	9
196	La Ferme Reservoir	Black River	3
197	Valetta (Mangrapoule)	Moka	5
198	Eau Bleu	Grand Port	9
199	Mare aux Vacoas - main	Plaines Wilhems	8
200	La Nicoliere	Pamplemousses	5
201	Mare Longue	Plaines Wilhems	8
202	Bassin Blanc	Savanne	12
203	Grand Bassin	Savanne	8
204	Cascade Diamamouve	Moka	9
205	Mare Piram	Pamplemousses	1

C. UPLAND MARSH

FINAL NO.	Name or Nearest Town/Landmark	Administrative District	Map No.
UM0001	Brisee Verdier	Flacq	5
UM0002	Salazie South	Moka	5
UM0003	Pont Bon Dieu South	Moka	5
UM0005	Pont Bon Dieu South	Moka	5
UM0006	Salazie South	Moka	5
UM0008	Pont Bon Dieu South	Moka	5
UM0009	Salazie South	Moka	5
UM0011	Pont Bon Dieu South	Moka	5
UM0012	Salazie South	Moka	5
UM0013	Salazie South	Moka	5
UM0014	Pont Bon Dieu South	Moka	5
UM0015	Salazie South	Moka	5
UM0016	Salazie South	Moka	5
UM0017	Salazie South	Moka	5
UM0018	Pont Bon Dieu South	Moka	5
UM0019	Pont Bon Dieu South	Moka	5
UM0020	Salazie South	Moka	5
UM0021	Camp Thorel North	Moka	5
UM0022	Pont Bon Dieu South	Moka	5
UM0023	Pont Bon Dieu South	Moka	5
UM0024	Pont Bon Dieu South	Moka	5
UM0025	Pont Bon Dieu South	Moka	5
UM0026	Camp Thorel North	Moka	5
UM0027	Camp Thorel East	Moka	5
UM0028	Camp Thorel East	Moka	5
UM0029	Camp Thorel East	Moka	5

UPLAND MARSH (Continued)

UM0031	Camp Thorel East	Moka	5
UM0032	Camp Thorel East	Moka	5
UM0033	Camp Thorel East	Moka	5
UM0034	Camp Thorel East	Moka	5
UM0035	Camp Thorel East	Moka	5
UM0036	Camp Thorel East	Moka	5
UM0038	Camp Thorel East	Moka	5
UM0040	Camp Thorel East	Moka	5
UM0042	Camp Thorel East	Moka	5
UM0043	Camp Thorel East	Moka	5
UM0044	Camp Thorel East	Moka	5
UM0046	Camp Thorel East	Moka	5
UM0047	Camp Thorel East	Moka	5
UM0048	Camp Thorel East	Moka	5
UM0049	Camp Thorel East	Moka	5
UM0050	Camp Thorel East	Moka	5
UM0051	Camp Thorel East	Moka	5
UM0052	Camp Thorel East	Moka	5
UM0053	Camp Thorel East	Moka	5
UM0055	Camp Thorel East	Moka	5
UM0057	Camp Thorel East	Moka	5
UM0059	Camp Thorel East	Moka	5
UM0060	Camp Thorel East	Moka	5
UM0061	Camp Thorel East	Moka	5
UM0062	Camp Thorel East	Moka	5
UM0064	Camp Thorel East	Moka	5
UM0065	Camp Thorel East	Moka	5
UM0066	Camp Thorel East	Moka	5
UM0067	Camp Thorel East	Moka	5
UM0068	Camp Thorel East	Moka	5
UM0069	Camp Thorel East	Moka	5
UM0070	Camp Thorel East	Moka	5
UM0072	Camp Thorel East	Moka	5
UM0073	Camp Thorel East	Moka	5
UM0074	Camp Thorel East	Moka	5
UM0075	Camp Thorel East	Moka	5
UM0076	Camp Thorel East	Moka	5
UM0077	Mount La Terre NE	Moka	5
UM0078	Mount La Terre NE	Moka	5
UM0080	Mount La Terre NE	Moka	5
UM0081	Mount La Terre NE	Moka	5
UM0082	Mount La Terre NE	Moka	5
UM0083	Mount La Terre NE	Moka	5
UM0084	Mount La Terre NE	Moka	5
UM0086	Mount La Terre NE	Moka	5
UM0087	Mount La Terre NE	Moka	5
UM0088	Mount La Terre NE	Moka	5
UM0089	Merlo3	Moka	8
UM0090	Merlo2	Moka	8
UM0092	Merlo	Moka	8

UPLAND MARSH (Continued)

UM0093	Merlo4	Moka	8
UM0094	Mount La Terre SE	Moka	9
UM0095	Mount La Terre SE	Moka	9
UM0096	Mount La Terre SE	Moka	9
UM0097	Mount La Terre SE	Moka	9
UM0098	Midlands East-Grand Riviere SE	Moka	9
UM0099	Midlands East-Grand Riviere SE	Moka	9
UM0100	Midlands East-Grand Riviere SE	Moka	9
UM0101	Midlands East-Grand Riviere SE	Moka	9
UM0102	Cascade Diamamouve South	Flacq	9
UM0104	Monvert	Plaines Wilhelm	8
UM0105	Monvert	Plaines Wilhelm	8
UM0106	Monvert	Plaines Wilhelm	8
UM0109	Monvert	Plaines Wilhelm	8
UM0110	Monvert	Plaines Wilhelm	8
UM0111	Monvert	Plaines Wilhelm	8
UM0113	Monvert	Plaines Wilhelm	8
UM0114	Monvert	Plaines Wilhelm	8
UM0115	Monvert	Plaines Wilhelm	8
UM0116	Monvert	Plaines Wilhelm	8
UM0117	Monvert	Plaines Wilhelm	8
UM0118	Monvert	Plaines Wilhelm	8
UM0119	Monvert	Plaines Wilhelm	8
UM0120	Monvert	Plaines Wilhelm	8
UM0121	Monvert	Plaines Wilhelm	8
UM0122	Monvert	Plaines Wilhelm	8
UM0123	Monvert	Plaines Wilhelm	8
UM0125	Monvert	Plaines Wilhelm	8
UM0126	Seizieme Mille	Plaines Wilhelm	8
UM0127	Monvert	Plaines Wilhelm	8
UM0128	Monvert	Plaines Wilhelm	8
UM0129	Monvert	Plaines Wilhelm	8
UM0131	Monvert	Plaines Wilhelm	8
UM0133	Monvert	Plaines Wilhelm	8
UM0134	Monvert	Plaines Wilhelm	8
UM0135	Midlands South	Plaines Wilhelm	8
UM0136	Midlands South 2	Plaines Wilhelm	8
UM0137	Midlands South	Plaines Wilhelm	8
UM0138	Midlands South1	Plaines Wilhelm	8
UM0139	Midlands South 3	Plaines Wilhelm	8
UM0140	Midlands South	Plaines Wilhelm	8
UM0141	Midlands South	Plaines Wilhelm	8
UM0142	La Chartreuse2	Moka	9
UM0143	La Chartreuse3	Moka	9
UM0144	La Chartreuse4	Moka	9
UM0145	Midlands-Mt La Grave South	Grand Port	9
UM0146	Midlands-Mt La Grave South	Grand Port	9
UM0148	Bambous Mt - Gingembre	Flacq	10
UM0149	Bambous Mt - Riviere Champagne	Grand Port	10
UM0150	Bambous Mt - Ferney Valley	Grand Port	10

UPLAND MARSH (Continued)

UM0151	Bambous Mt - Ferney Valley	Grand Port	10
UM0152	Macchabe Road North	Plaines Wilhelm	8
UM0153	Macchabe Road North	Plaines Wilhelm	8
UM0155	Macchabe Road North	Plaines Wilhelm	8
UM0156	Macchabe Road North	Plaines Wilhelm	8
UM0157	Macchabe Road North	Plaines Wilhelm	8
UM0158	Macchabe Road North	Plaines Wilhelm	8
UM0159	Macchabe Road North	Plaines Wilhelm	8
UM0160	Macchabe Road North	Plaines Wilhelm	8
UM0161	Sept Cascades	Plaines Wilhelm	8
UM0162	Tamarind Falls South	Plaines Wilhelm	8
UM0164	Chamoury Rd B102	Plaines Wilhelm	8
UM0165	Mare aux Vacoas North B102	Plaines Wilhelm	8
UM0166	Mare aux Vacoas North B102	Plaines Wilhelm	8
UM0167	Mare aux Vacoas North B102	Plaines Wilhelm	8
UM0168	Mare aux Vacoas North B102	Plaines Wilhelm	8
UM0169	Mare aux Vacoas North B102	Plaines Wilhelm	8
UM0170	Monvert	Plaines Wilhelm	8
UM0171	Monvert	Plaines Wilhelm	8
UM0172	Monvert	Plaines Wilhelm	8
UM0173	Monvert	Plaines Wilhelm	8
UM0174	Monvert	Plaines Wilhelm	8
UM0175	Monvert	Plaines Wilhelm	8
UM0176	Monvert	Plaines Wilhelm	8
UM0178	Monvert	Plaines Wilhelm	8
UM0179	Monvert	Plaines Wilhelm	8
UM0180	Monvert	Plaines Wilhelm	8
UM0181	Monvert	Plaines Wilhelm	8
UM0182	Monvert	Plaines Wilhelm	8
UM0183	Monvert	Plaines Wilhelm	8
UM0185	Monvert	Plaines Wilhelm	8
UM0186	Monvert	Plaines Wilhelm	8
UM0187	Monvert	Plaines Wilhelm	8
UM0188	Monvert	Plaines Wilhelm	8
UM0190	Monvert	Plaines Wilhelm	8
UM0191	Monvert	Plaines Wilhelm	8
UM0192	Monvert	Plaines Wilhelm	8
UM0193	Monvert	Plaines Wilhelm	8
UM0194	Monvert	Plaines Wilhelm	8
UM0195	Monvert	Plaines Wilhelm	8
UM0196	Monvert	Plaines Wilhelm	8
UM0198	Monvert	Plaines Wilhelm	8
UM0199	Monvert	Plaines Wilhelm	8
UM0200	Monvert	Plaines Wilhelm	8
UM0201	Monvert	Plaines Wilhelm	8
UM0202	Monvert	Plaines Wilhelm	8
UM0203	Monvert	Plaines Wilhelm	8
UM0205	Monvert	Plaines Wilhelm	8
UM0206	Monvert	Plaines Wilhelm	8
UM0207	Monvert	Plaines Wilhelm	8
UM0208	Monvert	Plaines Wilhelm	8

UPLAND MARSH (Continued)

UM0209	Monvert	Plaines Wilhelm	8
UM0210	Monvert	Plaines Wilhelm	8
UM0211	Monvert	Plaines Wilhelm	8
UM0212	Monvert	Plaines Wilhelm	8
UM0213	Monvert	Plaines Wilhelm	8
UM0214	Monvert	Plaines Wilhelm	8
UM0216	Plaine Bonnefin1	Plaines Wilhelm	8
UM0217	Plaine Bonnefin2	Plaines Wilhelm	8
UM0219	Plaine Bonnefin3	Plaines Wilhelm	8
UM0220	Plaine Bonnefin4	Plaines Wilhelm	8
UM0221	Plaine Bonnefin5	Plaines Wilhelm	8
UM0222	Plaine Bonnefin6	Plaines Wilhelm	8
UM0223	Plaine Bonnefin7	Plaines Wilhelm	8
UM0224	Plaine Bonnefin8	Plaines Wilhelm	8
UM0225	Plaine Bonnefin9	Plaines Wilhelm	8
UM0226	Plaine Bonnefin10	Plaines Wilhelm	8
UM0227	Plaine Bonnefin11	Plaines Wilhelm	8
UM0228	Plaine Bonnefin12	Plaines Wilhelm	8
UM0229	Plaine Bonnefin13	Plaines Wilhelm	8
UM0230	Plaine Bonnefin14	Plaines Wilhelm	8
UM0231	Plaine Bonnefin15	Plaines Wilhelm	8
UM0232	Plaine Bonnefin16	Plaines Wilhelm	8
UM0233	Plaine Bonnefin17	Plaines Wilhelm	8
UM0234	Seizieme Mille	Plaines Wilhelm	8
UM0235	Monvert	Plaines Wilhelm	8
UM0236	Monvert	Plaines Wilhelm	8
UM0237	Monvert	Plaines Wilhelm	8
UM0238	Seizieme Mille	Plaines Wilhelm	8
UM0239	Monvert	Plaines Wilhelm	8
UM0240	Monvert	Plaines Wilhelm	8
UM0241	Seizieme Mille	Plaines Wilhelm	8
UM0243	Monvert	Plaines Wilhelm	8
UM0244	Seizieme Mille	Plaines Wilhelm	8
UM0245	Seizieme Mille	Plaines Wilhelm	8
UM0246	Seizieme Mille	Plaines Wilhelm	8
UM0247	Seizieme Mille	Plaines Wilhelm	8
UM0248	Seizieme Mille	Plaines Wilhelm	8
UM0250	Monvert	Plaines Wilhelm	8
UM0251	Monvert	Plaines Wilhelm	8
UM0252	Monvert	Plaines Wilhelm	8
UM0253	Monvert	Plaines Wilhelm	8
UM0254	Seizieme Mille	Plaines Wilhelm	8
UM0255	Monvert	Plaines Wilhelm	8
UM0257	Seizieme Mille	Plaines Wilhelm	8
UM0259	Monvert	Plaines Wilhelm	8
UM0262	Seizieme Mille	Plaines Wilhelm	8
UM0264	Seizieme Mille	Plaines Wilhelm	8
UM0265	Seizieme Mille	Plaines Wilhelm	8
UM0266	Monvert	Plaines Wilhelm	8
UM0267	Monvert	Plaines Wilhelm	8
UM0268	Seizieme Mille	Plaines Wilhelm	8
UM0269	Seizieme Mille	Plaines Wilhelm	8

UPLAND MARSH (Continued)

UM0271	Monvert	Plaines Wilhelm	8
UM0272	Monvert	Plaines Wilhelm	8
UM0273	Monvert	Plaines Wilhelm	8
UM0274	Seizieme Mille	Plaines Wilhelm	8
UM0275	Monvert	Plaines Wilhelm	8
UM0276	Monvert	Plaines Wilhelm	8
UM0277	Seizieme Mille	Plaines Wilhelm	8
UM0278	Seizieme Mille	Plaines Wilhelm	8
UM0279	Seizieme Mille	Plaines Wilhelm	8
UM0280	Seizieme Mille	Plaines Wilhelm	8
UM0282	Monvert	Plaines Wilhelm	8
UM0283	Seizieme Mille	Plaines Wilhelm	8
UM0284	Curepipe Point	Plaines Wilhelm	8
UM0285	Rafin-Labury	Plaines Wilhelm	8
UM0286	Rafin-Labury	Plaines Wilhelm	8
UM0287	Rafin-Labury	Plaines Wilhelm	8
UM0288	Rafin-Labury	Plaines Wilhelm	8
UM0290	Rafin-Labury	Plaines Wilhelm	8
UM0292	Seizieme Mille	Plaines Wilhelm	8
UM0293	Seizieme Mille	Plaines Wilhelm	8
UM0294	Lapeyre	Plaines Wilhelm	8
UM0298	Lapeyre	Plaines Wilhelm	8
UM0299	Lapeyre	Plaines Wilhelm	8
UM0300	Lapeyre	Plaines Wilhelm	8
UM0301	Lapeyre	Plaines Wilhelm	8
UM0302	Lapeyre	Plaines Wilhelm	8
UM0303	Eau Bleue East	Grand Port	9
UM0304	Eau Bleue East	Grand Port	9
UM0305	Eau Bleue East	Grand Port	9
UM0306	Eau Bleue East	Grand Port	9
UM0307	Eau Bleue East	Grand Port	9
UM0308	Mare Longue North1	Plaines Wilhelm	8
UM0309	Mare Longue North2	Plaines Wilhelm	8
UM0310	Mare Longue East1	Plaines Wilhelm	8
UM0311	Mare Longue East2	Plaines Wilhelm	8
UM0312	Mare Longue East3	Plaines Wilhelm	8
UM0313	Mare Longue North3	Plaines Wilhelm	8
UM0314	Mare Longue North4	Plaines Wilhelm	8
UM0315	Mare Longue North5	Plaines Wilhelm	8
UM0317	Mare Longue North6	Plaines Wilhelm	8
UM0318	Mare Longue North7	Plaines Wilhelm	8
UM0319	Mare Longue North8	Plaines Wilhelm	8
UM0320	Mare Longue North9	Plaines Wilhelm	8
UM0321	Mare Longue North10	Plaines Wilhelm	8
UM0323	Mare Longue South	Plaines Wilhelm	8
UM0324	Mare Longue South	Plaines Wilhelm	8
UM0325	Mare Longue South	Plaines Wilhelm	8
UM0328	Mare aux Vacoas NorthEast	Plaines Wilhelm	8
UM0334	Mare aux Vacoas NorthEast	Plaines Wilhelm	8
UM0335	Mare aux Vacoas NorthEast	Plaines Wilhelm	8

UPLAND MARSH (Continued)

UM0336	Mare aux Vacoas NorthEast	Plaines Wilhelm	8
UM0337	Mare aux Vacoas NorthEast	Plaines Wilhelm	8
UM0340	Mare aux Vacoas NorthEast	Plaines Wilhelm	8
UM0341	Mare aux Vacoas NorthEast	Plaines Wilhelm	8
UM0342	Mare aux Vacoas NorthEast	Plaines Wilhelm	8
UM0343	Mare aux Vacoas NorthEast	Plaines Wilhelm	8
UM0344	Mare aux Vacoas NorthEast	Plaines Wilhelm	8
UM0345	Mare aux Vacoas NorthEast	Plaines Wilhelm	8
UM0346	Mare aux Vacoas NorthEast	Plaines Wilhelm	8
UM0347	Mare aux Vacoas NorthEast	Plaines Wilhelm	8
UM0349	Mare aux Vacoas NorthEast	Plaines Wilhelm	8
UM0350	Mare aux Vacoas NorthEast	Plaines Wilhelm	8
UM0351	Mare aux Vacoas East	Plaines Wilhelm	8
UM0352	Mare aux Vacoas South- R.du Poste	Plaines Wilhelm	8
UM0353	Mare aux Vacoas South- R.du Poste	Plaines Wilhelm	8
UM0354	Mare aux Vacoas South- R.du Poste	Plaines Wilhelm	8
UM0355	Mare aux Vacoas South- R.du Poste	Plaines Wilhelm	8
UM0357	Mare aux Vacoas South- R.du Poste	Plaines Wilhelm	8
UM0358	Mare aux Vacoas South- R.du Poste	Plaines Wilhelm	8
UM0360	Mare aux Vacoas South- R.du Poste	Plaines Wilhelm	8
UM0362	Mare aux Vacoas South- R.du Poste	Plaines Wilhelm	8
UM0364	Mare aux Vacoas South- R.du Poste	Plaines Wilhelm	8
UM0365	Mare aux Vacoas South- R.du Poste	Plaines Wilhelm	8
UM0366	Mare aux Vacoas South- R.du Poste	Plaines Wilhelm	8
UM0368	Mare aux Vacoas South- R.du Poste	Plaines Wilhelm	8
UM0369	Mare aux Vacoas Arnaud	Plaines Wilhelm	8
UM0370	Mare aux Vacoas South- R.du Poste	Plaines Wilhelm	8
UM0372	Labury-Parc aux Cerfs	Plaines Wilhelm	8
UM0373	Labury-Parc aux Cerfs	Plaines Wilhelm	8
UM0374	Riviere Citron Nouvelle France	Plaines Wilhelm	8
UM0375	Riviere Citron Nouvelle France	Grand Port	8
UM0376	Riviere Citron Nouvelle France	Grand Port	8
UM0377	Riviere Citron Nouvelle France	Grand Port	8
UM0378	Riviere Citron Nouvelle France	Grand Port	8
UM0380	Riviere Citron Nouvelle France	Grand Port	8
UM0381	Riviere Citron Nouvelle France	Grand Port	8
UM0382	Riviere Citron Nouvelle France	Grand Port	8
UM0383	Mare Longue South	Plaines Wilhelm	8
UM0384	Mare Longue South	Plaines Wilhelm	8
UM0385	Mare Longue South	Plaines Wilhelm	8
UM0386	Mare Longue South	Plaines Wilhelm	8
UM0387	Mare Longue South	Plaines Wilhelm	8
UM0388	Mare Longue South	Plaines Wilhelm	8
UM0389	Mare Longue South	Plaines Wilhelm	8
UM0390	Mare Longue South	Plaines Wilhelm	8
UM0391	Mare Longue South	Plaines Wilhelm	8
UM0392	Mare Longue South	Plaines Wilhelm	8
UM0393	Mare Longue South	Plaines Wilhelm	8
UM0394	Mare Longue South	Plaines Wilhelm	8
UM0395	Mare Longue South	Plaines Wilhelm	8

UPLAND MARSH (Continued)

UM0396	Mare Longue South	Plaines Wilhelm	8
UM0397	Mare Longue South	Plaines Wilhelm	8
UM0398	Mare Longue South	Plaines Wilhelm	8
UM0399	Mare Longue South	Plaines Wilhelm	8
UM0400	Mare Longue South	Plaines Wilhelm	8
UM0401	Mare Longue South	Plaines Wilhelm	8
UM0402	Mare Longue South	Plaines Wilhelm	8
UM0403	Mare Longue South	Plaines Wilhelm	8
UM0404	Mare Longue South	Plaines Wilhelm	8
UM0406	Le Petrin North	Plaines Wilhelm	8
UM0407	Le Petrin North2	Plaines Wilhelm	8
UM0408	Le Petrin Central	Plaines Wilhelm	8
UM0409	Le Petrin North3	Plaines Wilhelm	8
UM0410	Le Petrin North4	Plaines Wilhelm	8
UM0411	Le Petrin North5	Plaines Wilhelm	8
UM0412	Le Petrin North6	Plaines Wilhelm	8
UM0413	Le Petrin North7	Plaines Wilhelm	8
UM0414	Le Petrin West	Plaines Wilhelm	8
UM0415	Le Petrin North8	Plaines Wilhelm	8
UM0416	Le Petrin North9	Plaines Wilhelm	8
UM0418	Le Petrin North10	Plaines Wilhelm	8
UM0420	Le Petrin North11	Plaines Wilhelm	8
UM0421	Le Petrin North12	Plaines Wilhelm	8
UM0423	Le Petrin Central 2	Plaines Wilhelm	8
UM0424	Le Petrin Central 3	Plaines Wilhelm	8
UM0425	Le Petrin East	Plaines Wilhelm	8
UM0426	Le Petrin East2	Plaines Wilhelm	8
UM0427	Le Petrin West6	Plaines Wilhelm	8
UM0428	Le Petrin West7	Plaines Wilhelm	8
UM0429	Le Petrin West8	Plaines Wilhelm	8
UM0432	Le Petrin West9	Plaines Wilhelm	8
UM0433	Le Petrin West10	Plaines Wilhelm	8
UM0434	Le Petrin West11	Plaines Wilhelm	8
UM0435	Le Petrin West12	Plaines Wilhelm	8
UM0436	Le Petrin West13	Plaines Wilhelm	8
UM0437	Le Petrin West14	Plaines Wilhelm	8
UM0438	Le Petrin East4	Plaines Wilhelm	8
UM0439	Le Petrin South	Plaines Wilhelm	8
UM0440	Le Petrin South2	Plaines Wilhelm	8
UM0442	Le Petrin South3	Plaines Wilhelm	8
UM0443	Le Petrin West 5	Plaines Wilhelm	8
UM0444	Le Petrin East5	Plaines Wilhelm	8
UM0445	Le Petrin South4	Plaines Wilhelm	8
UM0446	Le Petrin South5	Plaines Wilhelm	8
UM0447	Le Petrin East 3	Plaines Wilhelm	8
UM0448	Le Petrin South6	Plaines Wilhelm	8
UM0451	Le Petrin South7	Plaines Wilhelm	8
UM0453	Le Petrin South8	Plaines Wilhelm	8
UM0455	Le Petrin South9	Plaines Wilhelm	8
UM0457	Le Petrin South10	Plaines Wilhelm	8

UPLAND MARSH (Continued)

UM0458	Le Petrin South11	Plaines Wilhelm	8
UM0460	Le Petrin East7	Plaines Wilhelm	8
UM0462	Le Petrin South12	Plaines Wilhelm	8
UM0463	Le Petrin South13	Plaines Wilhelm	8
UM0466	Le Petrin South14	Plaines Wilhelm	8
UM0467	Le Petrin South15	Plaines Wilhelm	8
UM0468	Le Petrin South16	Plaines Wilhelm	8
UM0470	Le Petrin South17	Plaines Wilhelm	8
UM0472	Le Petrin East6	Plaines Wilhelm	8
UM0474	Le Petrin South 2	Plaines Wilhelm	8
UM0478	Le Petrin South	Plaines Wilhelm	8
UM0479	Le Petrin South	Plaines Wilhelm	8
UM0480	Le Petrin South	Plaines Wilhelm	8
UM0481	Le Petrin South	Plaines Wilhelm	8
UM0482	Le Petrin SFL	Plaines Wilhelm	8
UM0483	Le Petrin SFL	Plaines Wilhelm	8
UM0484	Le Petrin SFL	Plaines Wilhelm	8
UM0485	Le Petrin SFL	Plaines Wilhelm	8
UM0486	Le Petrin SFL	Plaines Wilhelm	8
UM0487	Le Petrin SFL	Plaines Wilhelm	8
UM0488	Le Petrin East7	Plaines Wilhelm	8
UM0489	Le Petrin East8	Plaines Wilhelm	8
UM0490	Le Petrin East9	Plaines Wilhelm	8
UM0491	Le Petrin East 2	Plaines Wilhelm	8
UM0492	Le Petrin East10	Plaines Wilhelm	8
UM0493	Le Petrin East11	Plaines Wilhelm	8
UM0494	Le Petrin East12	Plaines Wilhelm	8
UM0495	Le Petrin East13	Plaines Wilhelm	8
UM0496	Le Petrin East14	Plaines Wilhelm	8
UM0497	Le Petrin East15	Plaines Wilhelm	8
UM0498	Pandit Jhummun Giri Gosagne Napal	Plaines Wilhelm	8
UM0500	Pandit Jhummun Giri Gosagne Napal	Plaines Wilhelm	8
UM0502	Mare aux Vacoas South- R.du Poste	Plaines Wilhelm	8
UM0505	Mare aux Vacoas South- R.du Poste	Plaines Wilhelm	8
UM0507	Mare aux Vacoas South- R.du Poste	Plaines Wilhelm	8
UM0508	Mare aux Vacoas South- R.du Poste	Plaines Wilhelm	8
UM0510	Mare aux Vacoas South- R.du Poste	Plaines Wilhelm	8
UM0511	Mare aux Vacoas South- R.du Poste	Plaines Wilhelm	8
UM0512	Mare aux Vacoas South- R.du Poste	Plaines Wilhelm	8
UM0513	Mare aux Vacoas South- R.du Poste	Plaines Wilhelm	8
UM0514	Mare aux Vacoas South- R.du Poste	Plaines Wilhelm	8
UM0515	Mare aux Vacoas South- R.du Poste	Plaines Wilhelm	8
UM0516	Mare aux Vacoas South- R.du Poste	Plaines Wilhelm	8
UM0518	Mare aux Vacoas South- R.du Poste	Plaines Wilhelm	8
UM0519	Mare aux Vacoas South- R.du Poste	Plaines Wilhelm	8
UM0520	Mare aux Vacoas South- R.du Poste	Plaines Wilhelm	8
UM0521	Mare aux Vacoas South- R.du Poste	Plaines Wilhelm	8
UM0522	Mare aux Vacoas South- R.du Poste	Plaines Wilhelm	8
UM0523	Mare aux Vacoas South- R.du Poste	Plaines Wilhelm	8
UM0524	Mare aux Vacoas South- R.du Poste	Plaines Wilhelm	8

UPLAND MARSH (Continued)

UM0525	Mare aux Vacoas South- R.du Poste	Plaines Wilhelm	8
UM0526	Mare aux Vacoas South- R.du Poste	Plaines Wilhelm	8
UM0528	Riviere Citron Nouvelle France	Grand Port	8
UM0529	Riviere Citron Nouvelle France	Grand Port	8
UM0530	Riviere Citron Nouvelle France	Grand Port	8
UM0531	Riviere Citron Nouvelle France	Grand Port	8
UM0532	Riviere Citron Nouvelle France	Grand Port	8
UM0533	Riviere Citron Nouvelle France	Grand Port	8
UM0534	Riviere Citron Nouvelle France	Grand Port	8
UM0535	R. du Poste	Grand Port	8
UM0536	R. du Poste	Grand Port	8
UM0540	Le Petrin Far South	Black River	8
UM0541	Le Petrin Far South	Savanne	8
UM0542	Le Petrin Far South	Savanne	8
UM0543	Le Petrin Far South	Plaines Wilhelm	8
UM0544	Le Petrin Far South	Plaines Wilhelm	8
UM0545	Le Petrin Far South	Plaines Wilhelm	8
UM0546	Le Petrin Far South	Plaines Wilhelm	8
UM0548	Le Petrin Far South	Savanne	8
UM0549	Les Mares NE SFL	Plaines Wilhelm	8
UM0550	Les Mares North	Plaines Wilhelm	8
UM0551	Les Mares North	Plaines Wilhelm	8
UM0552	Les Mares NW	Plaines Wilhelm	8
UM0554	Les Mare North	Plaines Wilhelm	8
UM0555	Les Mares NE SFL	Plaines Wilhelm	8
UM0556	Les Mare North	Plaines Wilhelm	8
UM0557	Les Mare North	Plaines Wilhelm	8
UM0558	Les Mares NE SFL	Plaines Wilhelm	8
UM0560	Les Mare North	Plaines Wilhelm	8
UM0561	Les Mares NE SFL	Plaines Wilhelm	8
UM0563	Les Mare North	Plaines Wilhelm	8
UM0564	Les Mares NE SFL	Plaines Wilhelm	8
UM0565	Les Mare North	Plaines Wilhelm	8
UM0566	Les Mare North	Plaines Wilhelm	8
UM0567	Les Mares NE SFL	Plaines Wilhelm	8
UM0569	Les Mares NE SFL	Plaines Wilhelm	8
UM0570	Les Mares NE SFL	Plaines Wilhelm	8
UM0571	Les Mare North	Plaines Wilhelm	8
UM0572	Les Mares NE SFL	Plaines Wilhelm	8
UM0574	Les Mare North	Plaines Wilhelm	8
UM0575	Les Mares NE SFL	Plaines Wilhelm	8
UM0576	Les Mares NE SFL	Plaines Wilhelm	8
UM0577	Les Mares NW	Plaines Wilhelm	8
UM0578	Les Mares North	Plaines Wilhelm	8
UM0580	Les Mares NE SFL	Plaines Wilhelm	8
UM0581	Les Mares NE SFL	Savanne	8
UM0582	Les Mares West5	Savanne	8
UM0583	Les Mares West6	Savanne	8
UM0584	Les Mares West7	Savanne	8
UM0586	Les Mares West8	Savanne	8

UPLAND MARSH (Continued)

UM0587	Les Mares West9	Savanne	8
UM0588	Les Mares West10	Savanne	8
UM0589	Les Mares West11	Savanne	8
UM0590	Les Mares NE SFL	Savanne	8
UM0591	Les Mares NE SFL	Savanne	8
UM0592	Les Mares Central2	Savanne	8
UM0593	Les Mares Central3	Savanne	8
UM0594	Le Mares West 4	Savanne	8
UM0596	Les Mares West 2	Savanne	8
UM0597	Les Mares West12	Savanne	8
UM0599	Les Mares West13	Savanne	8
UM0600	Les Mares West14	Savanne	8
UM0601	Les Mares West15	Savanne	8
UM0602	Les Mares West 3	Savanne	8
UM0603	Les Mares West16	Savanne	8
UM0604	Les Mares NE SFL	Savanne	8
UM0605	Les Mares West19	Savanne	8
UM0606	Les Mares West20	Savanne	8
UM0607	Les Mares Central6	Savanne	8
UM0608	Les Mares West21	Savanne	8
UM0609	Les Mares West22	Savanne	8
UM0610	Les Mares West23	Savanne	8
UM0611	Les Mares Central7	Savanne	8
UM0612	Les Mares Central8	Savanne	8
UM0613	Les Mares Central9	Savanne	8
UM0614	Les Mares West24	Savanne	8
UM0615	Les Mares Central10	Savanne	8
UM0616	Les Mares Central11	Savanne	8
UM0617	Les Mares West25	Savanne	8
UM0618	Les Mares Central	Savanne	8
UM0619	Les Mares West17	Savanne	8
UM0620	Les Mares West18	Savanne	8
UM0621	Les Mares NE SFL	Savanne	8
UM0622	Les Mares Central4	Savanne	8
UM0623	Les Mares Central5	Savanne	8
UM0624	Les Mares NE SFL	Savanne	8
UM0625	Les Mares South2	Savanne	8
UM0626	Les Mares South3	Savanne	8
UM0627	Les Mares South4	Savanne	8
UM0629	Les Mares South5	Savanne	8
UM0630	Les Mares South6	Savanne	8
UM0632	Les Mares South7	Savanne	8
UM0633	Les Mares South8	Savanne	8
UM0635	Les Mares South9	Savanne	8
UM0636	Les Mares South10	Savanne	8
UM0637	Le Mares South	Savanne	8
UM0638	Les Mares South11	Savanne	8
UM0641	Les Mares South12	Savanne	8
UM0642	Les Mares South13	Savanne	8
UM0643	Les Mares South14	Savanne	8

UPLAND MARSH (Continued)

UM0647	Les Mares NE SFL	Plaines Wilhelm	8
UM0648	Les Mares NE SFL	Plaines Wilhelm	8
UM0649	Les Mares NE SFL	Plaines Wilhelm	8
UM0650	Pandit Jhummun Giri Gosagne Napal3	Savanne	8
UM0651	Les Mares NE SFL	Plaines Wilhelm	8
UM0652	Grand Bassin-Pradier	Savanne	8
UM0653	Les Mares NE SFL	Plaines Wilhelm	8
UM0654	Les Mares NE SFL	Plaines Wilhelm	8
UM0655	Les Mares NE SFL	Plaines Wilhelm	8
UM0656	Les Mares NE SFL	Savanne	8
UM0657	Les Mares NE SFL	Plaines Wilhelm	8
UM0658	Les Mares NE SFL	Plaines Wilhelm	8
UM0659	Les Mares NE SFL	Plaines Wilhelm	8
UM0660	Grand Bassin2	Savanne	8
UM0661	Les Mares NE SFL	Plaines Wilhelm	8
UM0662	Les Mares NE SFL	Plaines Wilhelm	8
UM0663	Les Mares NE SFL	Plaines Wilhelm	8
UM0664	Les Mares NE SFL	Plaines Wilhelm	8
UM0665	Les Mares NE SFL	Plaines Wilhelm	8
UM0666	Grand Bassin	Savanne	8
UM0667	Grand Bassin	Savanne	8
UM0668	Les Mares NE SFL	Plaines Wilhelm	8
UM0669	Les Mares NE SFL	Plaines Wilhelm	8
UM0670	Grand Bassin	Savanne	8
UM0671	Les Mares NE SFL	Plaines Wilhelm	8
UM0674	Les Mares NE SFL	Savanne	8
UM0676	Grand Bassin South	Savanne	8
UM0678	Grand Bassin South	Savanne	8
UM0679	Grand Bassin South	Savanne	8
UM0680	Grand Bassin South	Savanne	8
UM0682	Grand Bassin South	Savanne	8
UM0684	Les Mares NE SFL	Savanne	8
UM0685	Les Mares NE SFL	Savanne	8
UM0686	Grand Bassin South	Savanne	8
UM0687	Grand Bassin South	Savanne	8
UM0688	Bois Sec	Savanne	8
UM0689	Les Mares NE SFL	Savanne	8
UM0691	Les Mares NE SFL	Savanne	8
UM0692	Les Mares NE SFL	Savanne	8
UM0693	Les Mares NE SFL	Savanne	8
UM0694	Les Mares NE SFL	Savanne	8
UM0695	Les Mares NE SFL	Savanne	8
UM0696	Les Mares NE SFL	Savanne	8
UM0697	Les Mares NE SFL	Savanne	8
UM0699	Les Mares NE SFL	Savanne	8
UM0700	Les Mares NE SFL	Savanne	8
UM0701	Les Mares NE SFL	Savanne	8
UM0702	Les Mares NE SFL	Savanne	8
UM0703	Bois Sec	Savanne	8
UM0704	Les Mares NE SFL	Savanne	8

UPLAND MARSH (Continued)

UM0705	Les Mares NE SFL	Savanne	8
UM0706	Les Mares NE SFL	Savanne	8
UM0707	Les Mares NE SFL	Savanne	8
UM0708	Les Mares NE SFL	Savanne	8
UM0709	Bois Sec	Savanne	8
UM0710	Les Mares NE SFL	Savanne	8
UM0711	Les Mares NE SFL	Savanne	8
UM0712	Les Mares NE SFL	Savanne	8
UM0713	Les Mares NE SFL	Savanne	8
UM0714	Les Mares NE SFL	Savanne	8
UM0716	Bois Sec	Savanne	8
UM0719	Bois Sec	Savanne	8
UM0720	Bois Sec	Savanne	8
UM0721	Bois Sec	Savanne	8
UM0722	Bois Sec	Savanne	8
UM0723	Les Mares SE	Savanne	8
UM0724	Bois Sec	Savanne	8
UM0725	Les Mares South15	Savanne	8
UM0726	Les Mares South16	Savanne	8
UM0728	Les Mares South17	Savanne	8
UM0729	Les Mares SE2	Savanne	8
UM0730	Les Mares SE3	Savanne	8
UM0734	La Chartreuse 1 - Midlands East	Moka	9
UM0735	Grand Bassin	Savanne	8

APPENDIX B

Wetland Photographs



**Photo 1 :
Healthy tidal
sedge
community at
Point aux
Pimments
(Wetland No.
113)**



**Photo 2: Typical
Typha-
dominated
wetland
fragmented by
urban backfilling
in Pereybere
area (Wetland
No. 13)**



Photo 3: Typha-dominated fragment created by staggered small-hold property development, Pereybere area (Wetland No. 15)



Photo 4: Wetland of high conservation value, free of urban or agricultural pressure with clear water and ringing Typha fields, Pereybere area (Wetland No. 17)



Photo 5:
Extensive
wetland area
with trench-
modified water
table to
support cattle
grazing, Cap
Malheareux
area (Wetland
No. 22)



Photo 6:
Wetlands as
dumping
grounds for
unwanted
construction
and house
demolition
materials, Cap
Malheareux
area (Wetland
No.



Photo 7: Typical grass-dominated wetlands are more likely to exhibit seasonal flooding Anse La Raie area (Wetland No. 33)



Photo 8: Typha-dominated wetland typical of locations found in many forest-planted State Land areas, Anse la Raie area (Wetland No. 30)



Photo 9: Mixed small hold agriculture making use of wetland soils. With *Phoenix dactylifera* palm, Bois des Oiseaux area (Wetland No. 28)



Photo 10: Heavy algal loads can be indicative of poor water quality, Pereybere area (Wetland No. 34)



Photo 11:
Extensive
wetland area
reconstituting
after small hold
agricultural
abandonment,
Choisy area
(Wetland No.
42)



Photo 12: A few coastal
wetlands, such as Bassin
Requins are more brackish
and dominated by
mangroves, Belle Mare
area (Wetland No. 213)



Photo 13: Typha wetland near sewerage discharge at local hotel (bottom left corner), Pt. Jerome area (Wetland No. 115)



Photo 14: Wetlands with shallow, but permanent, flooding tend to be fully vegetated, Point d'Esny area (Wetland No 119)



Photo 15: many of the best structured wetlands can be found in large sugar estates such as this one at Beau Vallon (Wetland No 177)

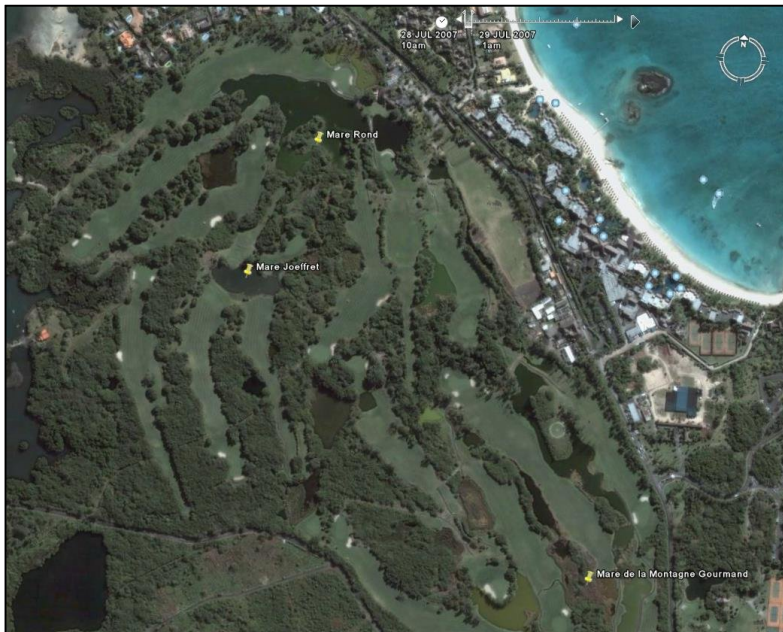


Photo 16: While wetland area has declined, wetland numbers have increased through fragmentation, Belle Mare Plage (Wetland No.s 45-75)



Photo 17:
Major
reservoirs
retain a large
fraction of
the available
freshwater in
Mauritius



Photo 18:
Many coastal
marshlands
are located
below sea
level.
Backfilling
and building
in these
areas
Invariably
leads to severe flooding.

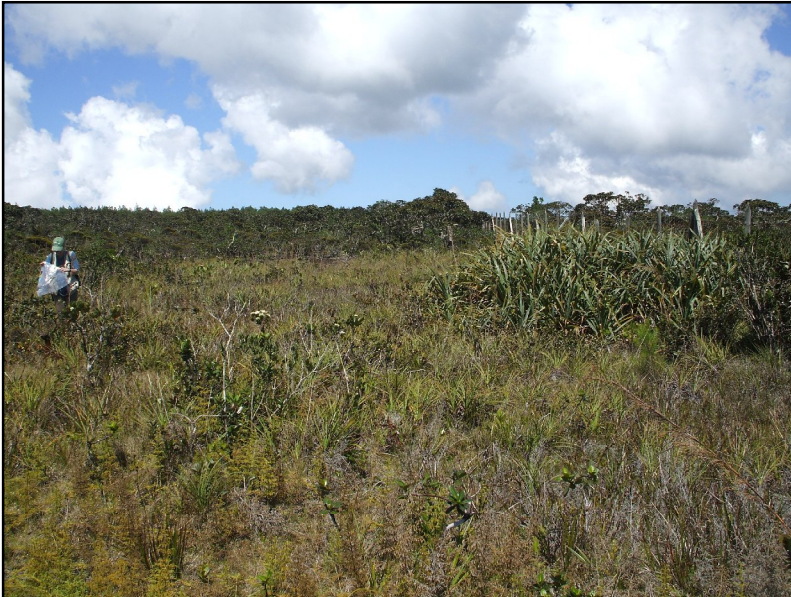


Photo 19:
Upland marsh represents the last refuge of many endemic *Pandanus* species. Le Petrin.



Photo 20:
Upland marshes occur in much smaller patches that coastal marshlands and often intercalated with heath, shrub and plantation forests.

APPENDIX C

Wetland Size, Elevation and Isolation Data

A. COASTAL MARSHLANDS

FINAL NO.	Area (ha)	NN (m)	Elev Min (m asl)	Elev Max (m asl)
1	0.48	347.90	4.76	5.00
2	0.76	111.80	4.73	5.64
3	0.19	82.30	6.89	7.25
4	0.18	82.30	5.91	6.98
5	0.50	147.60	7.00	7.43
6	0.71	147.60	7.34	7.74
7	2.99	180.50	-0.65	5.83
8	0.13	263.10	3.60	3.98
9	0.29	481.20	9.33	9.46
10	5.31	335.50	3.18	6.70
11	1.22	180.50	3.39	5.16
12	2.74	213.40	1.11	4.39
13	0.65	422.00	4.99	5.61
14	0.18	125.40	4.90	5.09
15	0.10	109.80	4.76	4.79
16	0.28	109.80	4.18	4.40
17	0.44	125.00	6.85	7.10
18	2.57	181.80	4.18	6.62
19	0.08	181.80	5.27	5.35
20	0.09	52.90	7.81	7.87
21	0.05	52.90	8.29	8.29
22	12.67	169.80	6.91	9.16
23	0.33	169.80	8.41	8.64
24	11.08	234.10	6.91	8.21
25	0.07	138.50	6.83	6.85
26	0.64	138.50	6.24	6.51
27	0.73	361.40	7.94	8.20
28	7.30	518.80	7.00	9.36
29	0.33	518.80	9.88	10.00
30	0.12	196.00	8.10	8.30
31	0.05	461.70	8.61	8.61
32	0.05	461.70	8.54	8.62
33	0.72	506.50	9.12	9.53
34	0.80	196.00	7.86	8.49
35	1.47	309.60	9.52	10.00
36	0.08	251.80	-3.08	-2.92
37	0.02	251.80	-3.11	-3.28
38	0.41	613.20	1.33	1.84
39	1.40	613.20	-3.03	-1.31
40	0.73	769.30	6.83	7.54
41	5.44	1102.70	2.54	6.47
42	11.34	769.30	4.45	9.46
43	1.80	279.90	4.54	6.17
44	0.17	171.60	-2.41	-0.68
45	0.06	126.20	-0.50	-0.50
46	1.51	92.50	-0.27	2.22
47	0.10	65.00	3.39	3.57
48	0.04	153.40	1.03	1.45
49	1.41	92.50	1.17	3.18
50	0.66	120.50	3.29	4.56

COASTAL MARSHLANDS (Continued)

51	0.88	109.70	3.76	5.36
52	0.08	65.00	3.76	3.95
53	0.17	30.50	4.98	5.80
54	0.01	46.80	4.40	4.40
55	0.06	30.50	5.60	6.46
56	1.12	61.40	2.08	4.06
57	0.03	67.90	2.82	2.82
58	0.30	109.70	2.49	3.10
59	0.26	79.40	0.05	0.93
60	0.12	79.40	1.59	1.73
61	0.10	58.90	-0.37	-0.26
62	0.13	67.60	1.78	2.04
63	0.10	67.60	2.77	3.08
64	0.34	105.50	0.88	1.40
65	2.14	123.80	-2.41	-0.53
66	0.32	124.90	-2.67	-2.15
67	0.34	58.90	-0.45	0.54
68	0.33	123.80	-0.60	0.11
69	0.03	63.30	-0.08	-0.08
70	0.08	77.10	2.82	3.21
71	0.08	72.00	3.31	3.58
72	0.05	72.00	3.83	3.83
73	0.09	52.30	0.73	0.73
74	0.08	52.30	1.23	1.67
75	0.32	124.90	-3.31	-2.92
76	9.48	1726.20	-5.11	2.09
77	3.93	1726.20	-1.79	4.94
78	0.12	240.90	1.93	2.37
79	2.70	544.50	2.73	6.32
80	5.86	544.50	0.50	5.42
81	1.10	120.00	7.55	9.09
82	0.14	120.00	7.98	8.45
83	0.96	227.80	8.61	9.21
84	1.24	326.00	8.52	9.73
85	0.91	326.00	7.43	9.42
86	0.08	1190.50	19.84	19.84
87	1.13	2520.90	-11.34	-9.26
89	1.02	214.70	7.25	9.71
90	0.96	214.70	4.68	7.11
91	0.17	89.40	7.40	7.82
92	0.36	56.00	6.48	7.21
93	0.05	56.00	7.24	7.38
94	0.03	67.60	8.31	8.55
95	0.67	126.50	6.78	7.52
96	1.58	126.70	5.81	6.84
97	0.23	255.00	7.92	8.46
99	0.69	150.30	7.53	8.93
100	0.33	150.30	8.18	8.84

COASTAL MARSHLANDS (Continued)

101	0.78	231.10	9.13	9.49
102	1.01	232.80	-7.43	-4.18
103	2.49	449.70	6.67	9.16
104	0.53	339.60	7.25	8.89
105	10.90	2974.30	-11.71	1.09
106	0.07	131.80	4.07	4.42
107	1.28	131.80	-0.50	9.05
108	0.11	904.50	1.95	2.05
109	0.13	232.80	-4.24	-3.82
110	0.91	111.80	7.20	7.71
111	1.17	111.80	7.15	7.93
112	1.85	4227.40	-3.89	1.71
113	0.76	3946.50	4.58	5.21
114	10.19	269.90	7.36	9.45
115	15.96	589.50	8.01	9.81
116	0.68	156.50	7.78	8.52
117	4.67	156.50	6.67	8.55
118	1.14	122.90	5.35	6.73
119	0.27	122.90	5.63	6.12
120	1.18	269.90	7.04	7.54
121	3.57	565.70	2.22	9.06
122	20.68	366.70	-5.38	9.50
123	2.16	366.70	-2.92	9.65
124	0.30	475.80	6.87	7.73
125	7.62	323.80	1.03	3.24
126	0.23	323.80	2.24	2.80
127	0.72	330.90	5.49	7.85
128	0.13	330.90	8.64	9.19
129	0.06	38.60	4.81	5.04
130	0.75	159.60	5.19	6.05
131	0.03	40.00	5.28	5.28
132	0.02	38.60	4.57	4.57
133	0.12	276.50	1.88	1.88
134	1.32	182.90	-1.52	2.57
135	3.40	322.10	-4.92	1.68
136	1.35	322.10	0.80	2.43
137	2.88	455.00	-7.94	-2.76
138	0.88	192.10	-0.22	2.28
139	2.52	182.90	-5.58	-2.10
140	5.37	465.30	-2.43	5.58
141	1.36	231.60	-1.60	0.10
142	0.61	68.20	-1.08	1.20
143	0.11	68.20	0.99	1.42
144	0.76	192.10	-6.00	-0.26
145	1.93	475.80	3.08	4.72
146	7.36	325.10	-1.92	1.69
147	4.61	887.10	8.14	10.18
148	7.61	403.40	5.42	9.62
151	2.20	240.90	3.43	5.10
152	2.20	639.40	9.78	10.00
153	0.55	439.00	2.69	3.51

COASTAL MARSHLANDS (Continued)

154	1.75	639.40	7.80	8.86
155	3.42	315.00	5.42	8.68
156	3.54	162.40	7.26	9.33
157	0.11	162.40	7.44	7.53
158	8.76	735.00	4.04	8.79
159	11.38	681.10	-1.41	8.31
160	1.33	522.50	6.12	9.63
161	0.54	77.00	7.36	7.84
162	2.42	240.70	4.83	6.05
164	16.12	423.50	10.55	22.22
165	4.95	423.50	17.43	20.55
168	3.08	418.60	2.58	4.98
172	1.37	3988.30	8.01	10.17
174	1.96	746.60	3.75	7.10
177	0.67	227.80	7.43	7.67
178	26.00	2520.90	1.60	9.56
179	0.04	133.40	-0.53	-0.53
180	0.03	84.90	-0.18	-0.18
181	0.08	50.10	-0.09	0.09
182	0.07	50.10	-0.12	0.06
183	0.31	1097.90	-1.40	-1.13
184	1.21	483.10	7.50	8.93
185	0.01	207.10	6.82	6.82
186	1.09	114.90	6.02	7.23
187	0.09	30.50	5.33	5.54
206	0.59	118.40	0.88	1.95
207	0.16	118.40	1.45	1.86
208	0.34	85.80	2.00	2.43
210	0.23	13046	2.00	4.00
211	1.76	238.70	-1.80	-0.18
212	0.40	238.70	-2.08	-1.57
213	1.77	317.90	5.87	8.98
214	0.77	335.80	3.13	4.12
215	0.16	85.80	2.64	3.07
218	29.60	1074.2	25.38	32.10
219	0.45	123.1	6.46	7.20
220	0.16	84.5	5.14	5.33
221	0.19	71.1	4.70	4.94
222	0.24	664.4	8.00	9.00
223	0.22	500.7	8.00	10.00
224	0.05	500.7	5.00	12.00
225	0.28	321.1	-0.60	-0.10
226	0.11	55.3	-0.50	0.00
227	0.03	55.3	-0.30	0.00
228	1.40	234.2	7.53	10.00
229	1.64	125.1	5.26	9.72
230	0.47	125.1	4.45	5.99
231	1.72	281	6.48	8.32
232	3.33	281	6.29	9.33
233	2.33	1275.7	7.52	8.96
234	0.07	147.1	5.91	5.91
235	0.48	404.3	3.47	4.27
236	0.16	404.3	3.27	4.04
237	0.27	212.1	4.64	4.96

B. LAKES & RESERVOIRS

FINAL NO.	Name or Nearest Town	Area (ha)	Avg Elev (m)
175	Dagotiere	18.14	442.5
188	Mare aux Vacoas - holding pond	5.49	566.3
189	Tamarin Falls	168.00	490.5
190	Piton du Milieu	60.13	435.2
191	Midlands Reservoir	283.00	386.8
192	Riche en Eau	3.39	125.7
196	La Ferme Reservoir	224.00	135.9
197	Valetta (Mangrapoule)	74.47	466.7
198	Eau Bleu	30.85	352.0
199	Mare aux Vacoas - main	560.00	564.1
200	La Nicoliere	87.27	245.6
201	Mare Longue	35.57	568.7
202	Bassin Blanc	3.79	455.0
203	Grand Bassin	8.91	655.0
204	Cascade Diamamouve	43.00	242.5
205	Mare Piram	37.19	28.3

C. UPLAND MARSH

FINAL NO.	Name or Nearest Town/Landmark	AREA (Ha)	Avg Elev (m)
UM0001	Brisee Verdiere	0.010	
UM0002	Salazie South	0.078	420
UM0003	Pont Bon Dieu South	0.040	322
UM0005	Pont Bon Dieu South	0.073	330
UM0006	Salazie South	0.013	372
UM0008	Pont Bon Dieu South	0.015	331
UM0009	Salazie South	0.018	
UM0011	Pont Bon Dieu South	0.020	330
UM0012	Salazie South	0.035	372
UM0013	Salazie South	0.035	371
UM0014	Pont Bon Dieu South	0.055	304
UM0015	Salazie South	0.170	373
UM0016	Salazie South	0.020	
UM0017	Salazie South	0.043	
UM0018	Pont Bon Dieu South	0.153	308
UM0019	Pont Bon Dieu South	0.010	312
UM0020	Salazie South	0.028	376
UM0021	Camp Thorel North	0.098	384
UM0022	Pont Bon Dieu South	0.083	307
UM0023	Pont Bon Dieu South	0.040	309
UM0024	Pont Bon Dieu South	0.025	
UM0025	Pont Bon Dieu South	0.245	299
UM0026	Camp Thorel North	0.143	367
UM0027	Camp Thorel East	0.093	351

UPLAND MARSH (Continued)

UM0028	Camp Thorel East	0.205	353
UM0029	Camp Thorel East	0.090	343
UM0031	Camp Thorel East	0.025	
UM0032	Camp Thorel East	0.013	354
UM0033	Camp Thorel East	0.165	350
UM0034	Camp Thorel East	0.030	
UM0035	Camp Thorel East	0.220	354
UM0036	Camp Thorel East	0.063	347
UM0038	Camp Thorel East	0.010	
UM0040	Camp Thorel East	0.013	354
UM0042	Camp Thorel East	0.063	351
UM0043	Camp Thorel East	0.035	321
UM0044	Camp Thorel East	0.010	324
UM0046	Camp Thorel East	0.195	312
UM0047	Camp Thorel East	0.043	
UM0048	Camp Thorel East	0.010	
UM0049	Camp Thorel East	0.013	352
UM0050	Camp Thorel East	0.023	310
UM0051	Camp Thorel East	0.015	310
UM0052	Camp Thorel East	0.020	
UM0053	Camp Thorel East	0.010	
UM0055	Camp Thorel East	0.023	
UM0057	Camp Thorel East	0.015	
UM0059	Camp Thorel East	0.030	319
UM0060	Camp Thorel East	0.018	
UM0061	Camp Thorel East	0.030	314
UM0062	Camp Thorel East	0.025	314
UM0064	Camp Thorel East	0.043	
UM0065	Camp Thorel East	0.085	313
UM0066	Camp Thorel East	0.063	342
UM0067	Camp Thorel East	0.043	314
UM0068	Camp Thorel East	0.035	313
UM0069	Camp Thorel East	0.013	
UM0070	Camp Thorel East	0.015	313
UM0072	Camp Thorel East	0.015	333
UM0073	Camp Thorel East	0.040	334
UM0074	Camp Thorel East	0.043	343
UM0075	Camp Thorel East	0.010	
UM0076	Camp Thorel East	0.085	342
UM0077	Mount La Terre NE	0.018	388
UM0078	Mount La Terre NE	0.013	
UM0080	Mount La Terre NE	0.015	389
UM0081	Mount La Terre NE	0.133	380
UM0082	Mount La Terre NE	0.015	380
UM0083	Mount La Terre NE	0.268	380
UM0084	Mount La Terre NE	0.023	380
UM0086	Mount La Terre NE	0.028	380
UM0087	Mount La Terre NE	0.020	379
UM0088	Mount La Terre NE	0.020	
UM0089	Merlo3	0.153	480
UM0090	Merlo2	0.278	479
UM0092	Merlo	0.508	480
UM0093	Merlo4	0.013	480
UM0094	Mount La Terre SE	0.025	369
UM0095	Mount La Terre SE	0.113	370

UPLAND MARSH (Continued)

UM0096	Mount La Terre SE	0.018	370
UM0097	Mount La Terre SE	0.230	372
UM0098	Midlands East-Grand Riviere SE	0.130	380
UM0099	Midlands East-Grand Riviere SE	0.015	381
UM0100	Midlands East-Grand Riviere SE	0.080	377
UM0101	Midlands East-Grand Riviere SE	0.115	381
UM0102	Cascade Diamamouve South	0.013	
UM0104	Monvert	0.043	
UM0105	Monvert	0.185	606
UM0106	Monvert	0.015	603
UM0109	Monvert	0.035	605
UM0110	Monvert	0.023	604
UM0111	Monvert	0.090	604
UM0113	Monvert	0.018	605
UM0114	Monvert	0.020	605
UM0115	Monvert	0.015	
UM0116	Monvert	0.033	604
UM0117	Monvert	0.383	606
UM0118	Monvert	0.013	
UM0119	Monvert	0.010	605
UM0120	Monvert	0.018	606
UM0121	Monvert	0.153	607
UM0122	Monvert	0.045	605
UM0123	Monvert	0.038	
UM0125	Monvert	0.030	
UM0126	Seizieme Mille	0.025	
UM0127	Monvert	0.028	
UM0128	Monvert	0.058	597
UM0129	Monvert	0.020	
UM0131	Monvert	0.035	
UM0133	Monvert	0.025	599
UM0134	Monvert	0.015	
UM0135	Midlands South	0.203	412
UM0136	Midlands South 2	0.330	415
UM0137	Midlands South	0.015	
UM0138	Midlands South1	0.510	415
UM0139	Midlands South 3	0.330	411
UM0140	Midlands South	0.010	
UM0141	Midlands South	0.050	411
UM0142	La Chartreuse2	0.085	375
UM0143	La Chartreuse3	0.028	370
UM0144	La Chartreuse4	0.033	
UM0145	Midlands-Mt La Grave South	0.015	
UM0146	Midlands-Mt La Grave South	0.013	
UM0148	Bambous Mt - Gingembre	0.010	333
UM0149	Bambous Mt - Riviere Champagne	0.043	112
UM0150	Bambous Mt - Ferney Valley	0.035	162
UM0151	Bambous Mt - Ferney Valley	0.085	156
UM0152	Macchabe Road North	0.028	
UM0153	Macchabe Road North	0.015	561
UM0155	Macchabe Road North	0.045	560
UM0156	Macchabe Road North	0.318	550
UM0157	Macchabe Road North	0.013	
UM0158	Macchabe Road North	0.033	496
UM0159	Macchabe Road North	0.023	491

UPLAND MARSH (Continued)

UM0160	Macchabe Road North	0.018	
UM0161	Sept Cascades	0.120	490
UM0162	Tamarind Falls South	0.015	506
UM0164	Chamoury Rd B102	0.043	550
UM0165	Mare aux Vacoas North B102	0.038	
UM0166	Mare aux Vacoas North B102	0.045	560
UM0167	Mare aux Vacoas North B102	0.050	560
UM0168	Mare aux Vacoas North B102	0.023	
UM0169	Mare aux Vacoas North B102	0.015	
UM0170	Monvert	0.025	605
UM0171	Monvert	0.010	
UM0172	Monvert	0.113	606
UM0173	Monvert	0.058	606
UM0174	Monvert	0.053	
UM0175	Monvert	0.240	608
UM0176	Monvert	0.448	607
UM0178	Monvert	0.030	608
UM0179	Monvert	0.035	608
UM0180	Monvert	0.015	
UM0181	Monvert	0.040	607
UM0182	Monvert	0.043	609
UM0183	Monvert	0.030	609
UM0185	Monvert	0.028	
UM0186	Monvert	0.160	610
UM0187	Monvert	0.025	608
UM0188	Monvert	0.073	608
UM0190	Monvert	0.010	608
UM0191	Monvert	0.015	
UM0192	Monvert	0.013	609
UM0193	Monvert	0.200	609
UM0194	Monvert	0.010	609
UM0195	Monvert	0.013	
UM0196	Monvert	0.038	
UM0198	Monvert	0.013	609
UM0199	Monvert	0.013	
UM0200	Monvert	0.040	617
UM0201	Monvert	0.025	604
UM0202	Monvert	0.023	619
UM0203	Monvert	0.015	
UM0205	Monvert	0.040	619
UM0206	Monvert	0.105	609
UM0207	Monvert	0.018	619
UM0208	Monvert	0.010	610
UM0209	Monvert	0.018	
UM0210	Monvert	0.010	
UM0211	Monvert	0.010	
UM0212	Monvert	0.018	610
UM0213	Monvert	0.045	617
UM0214	Monvert	0.033	
UM0216	Plaine Bonnefin1	0.038	582
UM0217	Plaine Bonnefin2	0.015	581
UM0219	Plaine Bonnefin3	0.030	
UM0220	Plaine Bonnefin4	0.028	582
UM0221	Plaine Bonnefin5	0.085	580
UM0222	Plaine Bonnefin6	0.025	

UPLAND MARSH (Continued)

UM0223	Plaine Bonnefin7	0.125	581
UM0224	Plaine Bonnefin8	0.038	
UM0225	Plaine Bonnefin9	0.015	
UM0226	Plaine Bonnefin10	0.055	580
UM0227	Plaine Bonnefin11	0.045	579
UM0228	Plaine Bonnefin12	0.030	
UM0229	Plaine Bonnefin13	0.058	578
UM0230	Plaine Bonnefin14	0.113	578
UM0231	Plaine Bonnefin15	0.223	576
UM0232	Plaine Bonnefin16	0.045	577
UM0233	Plaine Bonnefin17	0.048	576
UM0234	Seizieme Mille	0.033	604
UM0235	Monvert	0.115	603
UM0236	Monvert	0.025	
UM0237	Monvert	0.020	609
UM0238	Seizieme Mille	0.100	611
UM0239	Monvert	0.010	
UM0240	Monvert	0.030	
UM0241	Seizieme Mille	0.078	614
UM0243	Monvert	0.010	
UM0244	Seizieme Mille	0.010	
UM0245	Seizieme Mille	0.028	610
UM0246	Seizieme Mille	0.025	
UM0247	Seizieme Mille	0.045	
UM0248	Seizieme Mille	0.018	
UM0250	Monvert	0.010	
UM0251	Monvert	0.075	623
UM0252	Monvert	0.015	623
UM0253	Monvert	0.050	630
UM0254	Seizieme Mille	0.080	620
UM0255	Monvert	0.015	
UM0257	Seizieme Mille	0.110	602
UM0259	Monvert	0.013	642
UM0262	Seizieme Mille	0.083	620
UM0264	Seizieme Mille	0.015	615
UM0265	Seizieme Mille	0.018	
UM0266	Monvert	0.015	
UM0267	Monvert	0.038	648
UM0268	Seizieme Mille	0.033	627
UM0269	Seizieme Mille	0.068	646
UM0271	Monvert	0.030	650
UM0272	Monvert	0.023	647
UM0273	Monvert	0.013	
UM0274	Seizieme Mille	0.030	
UM0275	Monvert	0.010	
UM0276	Monvert	0.040	648
UM0277	Seizieme Mille	0.010	
UM0278	Seizieme Mille	0.013	648
UM0279	Seizieme Mille	0.023	
UM0280	Seizieme Mille	0.015	642
UM0282	Monvert	0.010	650
UM0283	Seizieme Mille	0.093	650
UM0284	Curepipe Point	0.020	
UM0285	Rafin-Labury	0.188	617
UM0286	Rafin-Labury	0.010	

UPLAND MARSH (Continued)

UM0287	Rafin-Labury	0.018	
UM0288	Rafin-Labury	0.055	608
UM0290	Rafin-Labury	0.013	
UM0292	Seizieme Mille	0.015	
UM0293	Seizieme Mille	0.035	569
UM0294	Lapeyre	0.018	
UM0298	Lapeyre	0.013	
UM0299	Lapeyre	0.010	
UM0300	Lapeyre	0.030	539
UM0301	Lapeyre	0.025	
UM0302	Lapeyre	0.065	
UM0303	Eau Bleue East	0.045	362
UM0304	Eau Bleue East	0.203	355
UM0305	Eau Bleue East	0.178	355
UM0306	Eau Bleue East	0.180	365
UM0307	Eau Bleue East	0.015	
UM0308	Mare Longue North1	0.043	543
UM0309	Mare Longue North2	0.018	
UM0310	Mare Longue East1	0.040	
UM0311	Mare Longue East2	0.058	601
UM0312	Mare Longue East3	0.018	599
UM0313	Mare Longue North3	0.065	527
UM0314	Mare Longue North4	0.035	530
UM0315	Mare Longue North5	0.015	
UM0317	Mare Longue North6	0.085	572
UM0318	Mare Longue North7	0.010	
UM0319	Mare Longue North8	0.045	571
UM0320	Mare Longue North9	0.163	569
UM0321	Mare Longue North10	0.013	
UM0323	Mare Longue South	0.013	589
UM0324	Mare Longue South	0.010	
UM0325	Mare Longue South	0.083	
UM0328	Mare aux Vacoas NorthEast	0.013	
UM0334	Mare aux Vacoas NorthEast	0.023	
UM0335	Mare aux Vacoas NorthEast	0.030	582
UM0336	Mare aux Vacoas NorthEast	0.025	585
UM0337	Mare aux Vacoas NorthEast	0.193	584
UM0340	Mare aux Vacoas NorthEast	0.010	
UM0341	Mare aux Vacoas NorthEast	0.013	
UM0342	Mare aux Vacoas NorthEast	0.043	571
UM0343	Mare aux Vacoas NorthEast	0.098	582
UM0344	Mare aux Vacoas NorthEast	0.010	582
UM0345	Mare aux Vacoas NorthEast	0.020	
UM0346	Mare aux Vacoas NorthEast	0.010	
UM0347	Mare aux Vacoas NorthEast	0.028	588
UM0349	Mare aux Vacoas NorthEast	0.080	569
UM0350	Mare aux Vacoas NorthEast	0.050	568
UM0351	Mare aux Vacoas East	0.023	571
UM0352	Mare aux Vacoas South- R.du Poste	0.013	
UM0353	Mare aux Vacoas South- R.du Poste	0.110	568
UM0354	Mare aux Vacoas South- R.du Poste	0.035	568
UM0355	Mare aux Vacoas South- R.du Poste	0.018	568
UM0357	Mare aux Vacoas South- R.du Poste	0.010	563
UM0358	Mare aux Vacoas South- R.du Poste	0.180	562
UM0360	Mare aux Vacoas South- R.du Poste	0.018	

UPLAND MARSH (Continued)

UM0362	Mare aux Vacoas South- R.du Poste	1.171	562
UM0364	Mare aux Vacoas South- R.du Poste	0.043	561
UM0365	Mare aux Vacoas South- R.du Poste	0.025	561
UM0366	Mare aux Vacoas South- R.du Poste	0.020	566
UM0368	Mare aux Vacoas South- R.du Poste	0.010	570
UM0369	Mare aux Vacoas Arnaud	0.048	571
UM0370	Mare aux Vacoas South- R.du Poste	0.025	
UM0372	Labury-Parc aux Cerfs	0.015	
UM0373	Labury-Parc aux Cerfs	0.010	
UM0374	Riviere Citron Nouvelle France	0.078	495
UM0375	Riviere Citron Nouvelle France	0.010	
UM0376	Riviere Citron Nouvelle France	0.035	501
UM0377	Riviere Citron Nouvelle France	0.013	499
UM0378	Riviere Citron Nouvelle France	0.038	503
UM0380	Riviere Citron Nouvelle France	0.020	511
UM0381	Riviere Citron Nouvelle France	0.028	
UM0382	Riviere Citron Nouvelle France	0.045	510
UM0383	Mare Longue South	0.018	595
UM0384	Mare Longue South	0.010	606
UM0385	Mare Longue South	0.135	595
UM0386	Mare Longue South	0.185	611
UM0387	Mare Longue South	0.035	598
UM0388	Mare Longue South	1.469	598
UM0389	Mare Longue South	0.010	
UM0390	Mare Longue South	0.013	
UM0391	Mare Longue South	0.033	595
UM0392	Mare Longue South	0.010	
UM0393	Mare Longue South	0.010	
UM0394	Mare Longue South	0.025	595
UM0395	Mare Longue South	0.050	596
UM0396	Mare Longue South	0.010	
UM0397	Mare Longue South	0.090	596
UM0398	Mare Longue South	0.058	596
UM0399	Mare Longue South	0.030	
UM0400	Mare Longue South	0.073	596
UM0401	Mare Longue South	0.010	
UM0402	Mare Longue South	0.028	596
UM0403	Mare Longue South	0.010	
UM0404	Mare Longue South	0.033	
UM0406	Le Petrin North	1.354	647
UM0407	Le Petrin North2	0.025	652
UM0408	Le Petrin Central	7.165	653
UM0409	Le Petrin North3	0.010	
UM0410	Le Petrin North4	0.183	650
UM0411	Le Petrin North5	0.028	650
UM0412	Le Petrin North6	0.013	
UM0413	Le Petrin North7	0.038	659
UM0414	Le Petrin West	2.604	659
UM0415	Le Petrin North8	0.010	
UM0416	Le Petrin North9	0.015	
UM0418	Le Petrin North10	0.025	
UM0420	Le Petrin North11	0.020	
UM0421	Le Petrin North12	0.013	
UM0423	Le Petrin Central 2	1.013	655
UM0424	Le Petrin Central 3	0.018	

UPLAND MARSH (Continued)

UM0425	Le Petrin East	2.454	659
UM0426	Le Petrin East2	0.013	
UM0427	Le Petrin West6	0.010	
UM0428	Le Petrin West7	0.133	657
UM0429	Le Petrin West8	0.015	657
UM0432	Le Petrin West9	0.020	657
UM0433	Le Petrin West10	0.040	656
UM0434	Le Petrin West11	0.013	
UM0435	Le Petrin West12	0.010	658
UM0436	Le Petrin West13	0.038	657
UM0437	Le Petrin West14	0.050	
UM0438	Le Petrin East4	0.123	657
UM0439	Le Petrin South	1.058	659
UM0440	Le Petrin South2	0.010	
UM0442	Le Petrin South3	0.010	658
UM0443	Le Petrin West 5	0.250	664
UM0444	Le Petrin East5	0.025	
UM0445	Le Petrin South4	0.053	659
UM0446	Le Petrin South5	0.010	
UM0447	Le Petrin East 3	0.250	657
UM0448	Le Petrin South6	0.088	657
UM0451	Le Petrin South7	0.108	662
UM0453	Le Petrin South8	0.015	666
UM0455	Le Petrin South9	0.050	661
UM0457	Le Petrin South10	0.028	666
UM0458	Le Petrin South11	0.070	660
UM0460	Le Petrin East7	0.018	
UM0462	Le Petrin South12	0.010	
UM0463	Le Petrin South13	0.033	663
UM0466	Le Petrin South14	0.073	661
UM0467	Le Petrin South15	0.175	668
UM0468	Le Petrin South16	0.010	
UM0470	Le Petrin South17	0.028	665
UM0472	Le Petrin East6	0.025	
UM0474	Le Petrin South 2	0.543	665
UM0478	Le Petrin South	0.053	662
UM0479	Le Petrin South	0.165	666
UM0480	Le Petrin South	0.023	
UM0481	Le Petrin South	0.190	668
UM0482	Le Petrin SFL	0.035	665
UM0483	Le Petrin SFL	0.018	660
UM0484	Le Petrin SFL	0.093	661
UM0485	Le Petrin SFL	0.023	653
UM0486	Le Petrin SFL	0.175	641
UM0487	Le Petrin SFL	0.010	
UM0488	Le Petrin East7	0.025	660
UM0489	Le Petrin East8	0.068	660
UM0490	Le Petrin East9	0.013	660
UM0491	Le Petrin East 2	0.308	660
UM0492	Le Petrin East10	0.013	
UM0493	Le Petrin East11	0.010	
UM0494	Le Petrin East12	0.020	657
UM0495	Le Petrin East13	0.020	655
UM0496	Le Petrin East14	0.075	660
UM0497	Le Petrin East15	0.010	

UPLAND MARSH (Continued)

UM0498	Pandit Jhummun Giri Gosagne Napal	0.530	649
UM0500	Pandit Jhummun Giri Gosagne Napal	0.113	642
UM0502	Mare aux Vacoas South- R.du Poste	0.010	
UM0505	Mare aux Vacoas South- R.du Poste	0.010	561
UM0507	Mare aux Vacoas South- R.du Poste	0.058	560
UM0508	Mare aux Vacoas South- R.du Poste	0.018	
UM0510	Mare aux Vacoas South- R.du Poste	0.018	559
UM0511	Mare aux Vacoas South- R.du Poste	0.020	559
UM0512	Mare aux Vacoas South- R.du Poste	0.043	559
UM0513	Mare aux Vacoas South- R.du Poste	0.045	
UM0514	Mare aux Vacoas South- R.du Poste	0.375	556
UM0515	Mare aux Vacoas South- R.du Poste	0.020	
UM0516	Mare aux Vacoas South- R.du Poste	0.183	552
UM0518	Mare aux Vacoas South- R.du Poste	0.063	549
UM0519	Mare aux Vacoas South- R.du Poste	0.013	
UM0520	Mare aux Vacoas South- R.du Poste	0.010	
UM0521	Mare aux Vacoas South- R.du Poste	0.025	
UM0522	Mare aux Vacoas South- R.du Poste	0.018	536
UM0523	Mare aux Vacoas South- R.du Poste	0.023	
UM0524	Mare aux Vacoas South- R.du Poste	0.010	532
UM0525	Mare aux Vacoas South- R.du Poste	0.073	529
UM0526	Mare aux Vacoas South- R.du Poste	0.023	
UM0528	Riviere Citron Nouvelle France	0.018	511
UM0529	Riviere Citron Nouvelle France	0.030	
UM0530	Riviere Citron Nouvelle France	0.015	
UM0531	Riviere Citron Nouvelle France	0.015	
UM0532	Riviere Citron Nouvelle France	0.020	
UM0533	Riviere Citron Nouvelle France	0.018	509
UM0534	Riviere Citron Nouvelle France	0.018	507
UM0535	R. du Poste	0.025	
UM0536	R. du Poste	0.060	491
UM0540	Le Petrin Far South	0.010	
UM0541	Le Petrin Far South	0.038	708
UM0542	Le Petrin Far South	0.125	698
UM0543	Le Petrin Far South	0.015	
UM0544	Le Petrin Far South	0.028	660
UM0545	Le Petrin Far South	0.043	660
UM0546	Le Petrin Far South	0.065	661
UM0548	Le Petrin Far South	0.010	698
UM0549	Les Mares NE SFL	0.033	
UM0550	Les Mares North	0.015	
UM0551	Les Mares North	0.068	667
UM0552	Les Mares NW	0.095	670
UM0554	Les Mare North	0.013	
UM0555	Les Mares NE SFL	0.033	666
UM0556	Les Mare North	0.013	670
UM0557	Les Mare North	0.103	668
UM0558	Les Mares NE SFL	0.010	667
UM0560	Les Mare North	0.058	670
UM0561	Les Mares NE SFL	0.070	667
UM0563	Les Mare North	0.028	671
UM0564	Les Mares NE SFL	0.218	669
UM0565	Les Mare North	0.053	671
UM0566	Les Mare North	0.045	669
UM0567	Les Mares NE SFL	0.020	669

UPLAND MARSH (Continued)

UM0569	Les Mares NE SFL	0.070	670
UM0570	Les Mares NE SFL	0.185	671
UM0571	Les Mare North	0.013	
UM0572	Les Mares NE SFL	0.023	667
UM0574	Les Mare North	0.010	670
UM0575	Les Mares NE SFL	0.088	667
UM0576	Les Mares NE SFL	0.048	669
UM0577	Les Mares NW	0.010	
UM0578	Les Mares North	0.588	678
UM0580	Les Mares NE SFL	0.030	
UM0581	Les Mares NE SFL	0.013	
UM0582	Les Mares West5	0.013	
UM0583	Les Mares West6	0.055	674
UM0584	Les Mares West7	0.010	
UM0586	Les Mares West8	0.015	
UM0587	Les Mares West9	0.023	
UM0588	Les Mares West10	0.028	668
UM0589	Les Mares West11	0.986	671
UM0590	Les Mares NE SFL	0.038	
UM0591	Les Mares NE SFL	0.050	690
UM0592	Les Mares Central2	0.010	
UM0593	Les Mares Central3	0.018	
UM0594	Le Mares West 4	0.480	676
UM0596	Les Mares West 2	0.691	678
UM0597	Les Mares West12	0.115	676
UM0599	Les Mares West13	0.010	679
UM0600	Les Mares West14	0.023	676
UM0601	Les Mares West15	0.043	680
UM0602	Les Mares West 3	0.598	680
UM0603	Les Mares West16	0.028	678
UM0604	Les Mares NE SFL	0.010	
UM0605	Les Mares West19	0.040	695
UM0606	Les Mares West20	0.023	679
UM0607	Les Mares Central6	0.020	
UM0608	Les Mares West21	0.048	678
UM0609	Les Mares West22	0.023	
UM0610	Les Mares West23	0.048	695
UM0611	Les Mares Central7	0.010	
UM0612	Les Mares Central8	0.120	684
UM0613	Les Mares Central9	0.020	688
UM0614	Les Mares West24	0.020	
UM0615	Les Mares Central10	0.013	
UM0616	Les Mares Central11	0.013	
UM0617	Les Mares West25	0.085	678
UM0618	Les Mares Central	0.248	698
UM0619	Les Mares West17	0.060	677
UM0620	Les Mares West18	0.013	
UM0621	Les Mares NE SFL	0.020	
UM0622	Les Mares Central4	0.025	689
UM0623	Les Mares Central5	0.120	690
UM0624	Les Mares NE SFL	0.023	712
UM0625	Les Mares South2	0.018	
UM0626	Les Mares South3	0.025	690
UM0627	Les Mares South4	0.215	689
UM0629	Les Mares South5	0.025	

UPLAND MARSH (Continued)

UM0630	Les Mares South6	0.020	
UM0632	Les Mares South7	0.048	705
UM0633	Les Mares South8	0.125	703
UM0635	Les Mares South9	0.060	705
UM0636	Les Mares South10	0.018	703
UM0637	Le Mares South	0.500	703
UM0638	Les Mares South11	0.098	686
UM0641	Les Mares South12	0.158	709
UM0642	Les Mares South13	0.145	704
UM0643	Les Mares South14	0.038	701
UM0647	Les Mares NE SFL	0.088	658
UM0648	Les Mares NE SFL	0.230	656
UM0649	Les Mares NE SFL	0.208	654
UM0650	Pandit Jhummun Giri Gosagne Napal3	0.010	
UM0651	Les Mares NE SFL	0.025	650
UM0652	Grand Bassin-Pradier	0.023	
UM0653	Les Mares NE SFL	0.013	649
UM0654	Les Mares NE SFL	0.048	649
UM0655	Les Mares NE SFL	0.120	650
UM0656	Les Mares NE SFL	0.113	654
UM0657	Les Mares NE SFL	0.010	
UM0658	Les Mares NE SFL	0.010	650
UM0659	Les Mares NE SFL	0.010	
UM0660	Grand Bassin2	0.010	661
UM0661	Les Mares NE SFL	0.063	
UM0662	Les Mares NE SFL	0.035	
UM0663	Les Mares NE SFL	0.033	656
UM0664	Les Mares NE SFL	0.010	
UM0665	Les Mares NE SFL	0.118	
UM0666	Grand Bassin	0.015	
UM0667	Grand Bassin	0.013	667
UM0668	Les Mares NE SFL	0.148	665
UM0669	Les Mares NE SFL	0.018	
UM0670	Grand Bassin	0.010	
UM0671	Les Mares NE SFL	0.023	
UM0674	Les Mares NE SFL	0.013	
UM0676	Grand Bassin South	0.048	
UM0678	Grand Bassin South	0.015	634
UM0679	Grand Bassin South	0.013	
UM0680	Grand Bassin South	0.025	
UM0682	Grand Bassin South	0.013	
UM0684	Les Mares NE SFL	0.020	
UM0685	Les Mares NE SFL	0.033	
UM0686	Grand Bassin South	0.258	658
UM0687	Grand Bassin South	0.015	
UM0688	Bois Sec	0.030	
UM0689	Les Mares NE SFL	0.025	
UM0691	Les Mares NE SFL	0.068	680
UM0692	Les Mares NE SFL	0.213	689
UM0693	Les Mares NE SFL	0.278	691
UM0694	Les Mares NE SFL	0.013	
UM0695	Les Mares NE SFL	0.083	689
UM0696	Les Mares NE SFL	0.075	686
UM0697	Les Mares NE SFL	0.098	687
UM0699	Les Mares NE SFL	0.010	688

UPLAND MARSH (Continued)

UM0700	Les Mares NE SFL	0.020	688
UM0701	Les Mares NE SFL	0.020	
UM0702	Les Mares NE SFL	0.030	
UM0703	Bois Sec	0.508	633
UM0704	Les Mares NE SFL	0.018	694
UM0705	Les Mares NE SFL	0.035	689
UM0706	Les Mares NE SFL	0.010	688
UM0707	Les Mares NE SFL	0.075	692
UM0708	Les Mares NE SFL	0.010	
UM0709	Bois Sec	0.030	
UM0710	Les Mares NE SFL	0.010	
UM0711	Les Mares NE SFL	0.010	691
UM0712	Les Mares NE SFL	0.010	
UM0713	Les Mares NE SFL	0.010	701
UM0714	Les Mares NE SFL	0.013	
UM0716	Bois Sec	0.045	630
UM0719	Bois Sec	0.065	632
UM0720	Bois Sec	0.020	634
UM0721	Bois Sec	0.020	622
UM0722	Bois Sec	0.018	635
UM0723	Les Mares SE	0.018	
UM0724	Bois Sec	0.045	472
UM0725	Les Mares South15	0.123	702
UM0726	Les Mares South16	0.048	707
UM0728	Les Mares South17	0.010	
UM0729	Les Mares SE2	0.053	
UM0730	Les Mares SE3	0.028	702
UM0734	La Chartreuse 1 - Midlands East	1.167	375
UM0735	Grand Bassin	0.218	667

APPENDIX D

Wetland Biological and Physical Feature Data

- Appendix D.1. Plant Species Abundances in Wetlands
- Appendix D.2. Wetland vegetation types
- Appendix D.3. Habitat – Ordination axes correlation tables
- Appendix D.4. Biological Diversity of coastal marshlands
- Appendix D.5. The endangered and vulnerable plant species
- Appendix D.6. Wetland physical characteristics

[illegible]

[illegible]

NWFS Consultancy
Final Version
June, 2009

A51

Appendix D.1 (cont)

Plant species/Marshland No.	229	230	231	232	233	234	235	236	237
<i>Acrostichum aureum</i>	100	100	0	100	0	0	0	0	0
<i>Adenanthera sp.</i>	0	0	0	0	0	0	0	0	0
<i>Ageratum sp.</i>	0	0	0	0	0	0	0	0	0
<i>Amaranthus bacifera</i>	0	0	0	0	0	0	0	0	0
<i>Ardisia elliptica</i>	0	0	0	0	0	0	0	0	0
<i>Asystasia gangetica</i>	0	0	0	0	0	0	0	0	0
<i>Atriplex halimus</i>	0	0	0	0	0	0	0	0	0
<i>Bacopa monnieri</i>	0	0	0	0	0	0	0	0	0
<i>Bambusa vulgaris</i>	0	0	0	0	0	0	0	0	0
<i>Basella alba</i>	0	0	0	0	0	0	0	0	0
<i>Cardiospermum halicacabum</i>	0	0	0	0	0	0	0	0	0
<i>Cassia filiformis</i>	33	0	0	0	0	0	0	0	0
<i>Casuarina equisetifolia</i>	0	0	0	0	0	0	0	0	0
<i>Centella asiatica</i>	0	0	0	0	0	0	0	0	0
<i>Clidemia hirta</i>	0	0	0	0	0	0	0	0	0
<i>Colocasia esculenta</i>	0	0	0	0	0	0	0	0	0
<i>Commelina benghalensis</i>	0	0	0	0	0	0	0	0	0
<i>Cordia curassavica</i>	0	0	0	0	0	0	0	0	0
<i>Cuscuta reflexa</i>	0	0	0	0	0	0	0	0	0
<i>Cyclosorus interruptus</i>	0	0	100	0	0	0	0	0	0
<i>Cynodon dactylon</i>	0	0	0	0	0	0	0	0	0
<i>Cyperus alternifolius</i>	0	0	0	0	0	0	0	0	0
<i>Cyperus compressus</i>	0	0	0	0	0	0	0	0	0
<i>Cyperus distans</i>	0	0	0	0	0	0	0	0	0
<i>Cyperus prolifer</i>	0	0	0	0	0	0	0	0	0
<i>Digitaria</i>	0	0	0	0	0	0	0	0	0
<i>Echinochloa colonum</i>	0	0	0	0	0	0	0	0	0
<i>Eichhornia gracipes</i>	0	0	0	0	0	0	0	0	0
<i>Eleocharis dulcis</i>	0	0	0	0	0	0	0	0	0
<i>Estuary</i>	0	0	0	0	0	0	0	0	0
<i>Fimbristylis ferruginea</i>	0	0	0	0	0	0	0	0	0
<i>Hibiscus tiliaceus</i>	0	0	0	0	0	0	0	0	0
<i>Ipomoea suberosa</i>	0	0	0	0	0	0	0	0	0
<i>Ipomoea aquatica</i>	0	0	0	0	0	0	0	0	0
<i>Ipomoea batatas</i>	0	0	0	0	0	0	0	0	0
<i>Ipomoea pes-caprae</i>	0	0	0	0	0	0	0	0	0
<i>Ischaemum coleotachys</i>	0	0	0	0	0	0	0	0	0
<i>Juncus sp.</i>	0	0	0	0	0	0	0	0	0
<i>Lantana camara</i>	0	0	0	0	0	0	0	0	0
<i>Lepturus radicans</i>	0	0	0	0	0	0	0	0	0
<i>Leucaena leucocephala</i>	33	33	67	0	0	0	0	0	0
<i>Litsea monopetala</i>	0	0	0	0	0	0	0	0	0
<i>Ludwigia jussiaeoides</i>	0	0	0	0	0	0	0	0	0
<i>Ludwigia stolonifera</i>	0	0	0	0	0	0	0	0	0
<i>Melinis repens</i>	0	0	0	0	0	0	0	0	0
<i>Mikania micrantha</i>	67	0	0	0	0	0	0	0	0
<i>Musa</i>	0	0	0	0	0	0	0	0	0
<i>Nelumbo nucifera</i>	0	0	0	0	0	0	0	0	0
<i>Nesaea triflora</i>	0	0	0	0	0	0	0	0	0
<i>Paederia foetida</i>	0	0	0	0	0	0	0	0	0
<i>Panicum maximum</i>	0	0	0	0	0	0	0	0	0
<i>Parthenium hysterophorus</i>	0	0	0	0	0	0	0	0	0
<i>Paspalum geminatum</i>	0	0	0	0	5	0	50	50	0
<i>Paspalum distichum</i>	0	0	0	0	0	75	0	0	0
<i>Paspalum vaginatum</i>	0	0	0	0	0	0	0	0	0
<i>Passiflora foetida</i>	0	0	0	0	0	0	0	0	0
<i>Pennisetum purpureum</i>	0	0	0	0	0	0	0	0	0
<i>Phemipis acidula</i>	0	0	0	0	0	0	0	0	0
<i>Phragmites mauritianus</i>	0	0	0	0	0	0	0	0	0
<i>Phylla nodiflora</i>	0	0	0	0	0	0	0	0	0
<i>Pistia stratiotes</i>	0	0	0	0	0	0	0	0	0
<i>Pithecellobium dulce</i>	67	67	0	0	10	0	0	0	0
<i>Polygonum leptopus</i>	0	0	0	0	0	0	0	0	0
<i>Pongamia pinnata</i>	0	0	0	0	0	0	0	0	0
<i>Raphia farinifera</i>	0	0	0	0	0	0	0	0	0
<i>Ravenala madagascariensis</i>	0	0	0	0	0	0	0	0	0
<i>Rhizophora mucronata</i>	0	0	0	0	30	0	0	0	0
<i>Ricinus communis</i>	0	0	0	0	0	0	0	0	0
<i>Rock</i>	0	0	67	0	5	25	0	0	0
<i>Salvinia molesta</i>	0	0	0	0	0	0	0	0	0
<i>Sand</i>	0	0	0	0	0	0	0	0	0
<i>Schinus terebinthifolius</i>	0	0	0	0	0	0	0	0	0
<i>Senecio confusus</i>	0	0	0	0	0	0	0	0	0
<i>Senna occidentalis</i>	0	0	0	0	5	0	0	0	0
<i>Sesbania bispinosa</i>	0	0	0	0	0	0	0	0	0
<i>Sesuvium ayresii</i>	0	0	0	0	0	0	0	0	0
<i>Solanum americanum</i>	0	0	0	0	0	0	0	0	0
<i>Solanum scutellum</i>	0	0	0	0	0	0	0	0	0
<i>Sporobolus virginicus</i>	0	0	0	0	0	0	0	0	0
<i>Stachytarpheta jamaicensis</i>	0	0	0	0	0	0	0	0	0
<i>Stenotaphrum dimidiatum</i>	0	0	0	0	0	0	0	0	0
<i>Tabebuia pallida</i>	0	0	0	0	0	0	0	0	0
<i>Tecoma pallida</i>	0	0	0	0	0	0	0	0	0
<i>Terminalia catappa</i>	0	0	0	0	0	0	0	0	0
<i>Thespesia populnea</i>	0	0	0	0	0	0	0	0	0
<i>Typha domingensis</i>	33	33	100	0	20	0	50	50	100
<i>Typhonorodorum lindleyanum</i>	0	0	0	0	0	0	0	0	0
<i>Verbena officinalis</i>	0	0	0	0	0	0	0	0	0
<i>Water</i>	33	100	0	50	35	0	0	0	100
<i>Zoysia matrella</i>	0	0	0	0	0	0	0	0	0

Appendix D.2 Marshland vegetation types and their X- and Y- axis values which are graphed in Figure 1. Values approaching zero may not be well described by this classification system, values >0.5 have been italicised.

Marshland ID	Wetland Type (Descriptor)	Descriptor strength	
		VegX-axis	VegY-axis
1	Vegetated wetlands dominated by Typha and grass	-0.6800	-0.5254
2	Vegetated wetlands dominated by Typha and grass	-0.4605	-0.9189
3	Vegetated wetlands dominated by Typha and grass	-0.7856	-0.9352
4	Vegetated wetlands dominated by Typha and grass	-0.1104	-0.9440
5	Open water & grass dominated	-0.8193	0.0825
6	Open water & grass dominated	-0.8210	0.4095
7	Vegetated wetlands dominated by Typha and grass	-0.0418	-1.3563
8	Vegetated wetlands dominated by Typha and grass	-0.2448	-0.5970
9	Vegetated wetlands dominated by Typha and grass	-0.4202	-1.2992
10	Vegetated wetlands dominated by Typha and grass	-0.0828	-1.3504
11	Vegetated wetlands dominated by Typha and Acrostichum	0.2458	-1.5659
12	Vegetated wetlands dominated by Typha and grass	-0.2209	-1.3913
13	Vegetated wetlands dominated by Typha and Acrostichum	0.0662	-0.3032
14	Vegetated wetlands dominated by Typha and grass	-2.1864	-1.2542
15	Vegetated wetlands dominated by Typha and Acrostichum	0.1489	-0.0148
16	Vegetated wetlands dominated by Typha and grass	-0.2559	-0.1051
17	Vegetated wetlands dominated by Typha and grass	-0.2368	-1.1145
18	Vegetated wetlands dominated by Typha and grass	-0.3015	-0.4345
19	Vegetated wetlands dominated by Typha and Acrostichum	0.1602	-0.0234
20	Vegetated wetlands dominated by Typha and grass	-1.1435	-0.0307
21	Vegetated wetlands dominated by Typha and grass	-1.4783	-0.4487
22	Vegetated wetlands dominated by Typha and grass	-0.3457	-0.0355
23	Vegetated wetlands dominated by Typha and grass	-0.1741	-0.1544
24	Open water & grass dominated	-0.2015	0.0159
25	Vegetated wetlands dominated by Typha and Acrostichum	0.1599	-0.0127
26	Open water & grass dominated	-0.5127	0.4018
27	Open water & grass dominated	-0.5648	0.3608
28	Vegetated wetlands dominated by Typha and grass	-0.4417	-0.3496
29	Vegetated wetlands dominated by Typha and Acrostichum	0.4291	-1.2744
30	Open water & grass dominated	-0.2599	0.0068
31	Open water & grass dominated	-0.3864	0.0128
32	Vegetated wetlands dominated by Typha and grass	-0.3053	-1.1301
33	Open water & grass dominated	-0.8032	0.5053
34	Open water & grass dominated	-0.2823	0.3366
35	Vegetated wetlands dominated by Typha and Acrostichum	0.0254	-1.2385
36	Open water & Acrostichum dominated	0.4458	0.7682
37	Open water & Acrostichum dominated	0.6217	0.8835
38	Vegetated wetlands dominated by Typha and grass	-0.2798	-0.1326
39	Vegetated wetlands dominated by Typha and Acrostichum	0.3495	-0.0931
40	Vegetated wetlands dominated by Typha and Acrostichum	0.7270	-0.7212
41	Open water & grass dominated	-0.2396	0.7812
42	Vegetated wetlands dominated by Typha and Acrostichum	0.0732	-0.9840
43	Vegetated wetlands dominated by Typha and Acrostichum	0.1017	-0.4337
44	Open water & grass dominated	-0.3442	0.9618
45	Open water & grass dominated	-0.5010	0.8515

Appendix D.2 (Cont)

46	Open water & Acrostichum dominated	0.1108	0.0013
47	Open water & Acrostichum dominated	0.1763	1.1705
48	Open water & grass dominated	-0.4354	0.8288
49	Vegetated wetlands dominated by Typha and Acrostichum	0.1939	-0.0602
50	Open water & grass dominated	-0.1799	0.4838
51	Open water & Acrostichum dominated	0.4101	0.7595
52	Open water & grass dominated	-0.2199	1.1935
53	Vegetated wetlands dominated by Typha and Acrostichum	0.0037	-0.1198
54	Open water & Acrostichum dominated	0.4368	0.7745
55	Open water & Acrostichum dominated	0.3224	0.0047
56	Open water & Acrostichum dominated	0.0599	1.1379
57	Open water & grass dominated	-0.5274	0.7543
58	Vegetated wetlands dominated by Typha and Acrostichum	0.4699	-0.2031
59	Open water & grass dominated	-2.3471	0.1665
60	Open water & Acrostichum dominated	2.0948	0.0835
61	Vegetated wetlands dominated by Typha and Acrostichum	0.3193	-0.0014
62	Open water & Acrostichum dominated	0.3924	0.9871
63	Open water & Acrostichum dominated	0.4802	0.8865
64	Open water & grass dominated	-0.0391	0.9902
65	Open water & grass dominated	-0.2434	0.3214
66	Open water & grass dominated	-0.1154	0.2921
67	Open water & grass dominated	-0.1135	0.2417
68	Open water & Acrostichum dominated	0.5492	0.8856
69	Open water & Acrostichum dominated	0.1828	1.2216
70	Open water & Acrostichum dominated	0.4029	0.9845
71	Open water & Acrostichum dominated	0.3703	1.0052
72	Open water & Acrostichum dominated	1.6799	1.0824
73	Open water & grass dominated	-1.1673	0.9606
74	Open water & Acrostichum dominated	1.5419	0.8482
75	Vegetated wetlands dominated by Typha and Acrostichum	0.3171	-1.3438
76	Open water & grass dominated	-0.0921	1.1932
77	Open water & Acrostichum dominated	0.4613	0.2019
78	Vegetated wetlands dominated by Typha and grass	-0.1666	-0.2329
79	Vegetated wetlands dominated by Typha and Acrostichum	0.4377	-0.3543
80	Vegetated wetlands dominated by Typha and Acrostichum	0.5654	-0.2476
81	Vegetated wetlands dominated by Typha and grass	-0.2659	-0.4763
82	Open water & grass dominated	-0.7072	0.3024
83	Vegetated wetlands dominated by Typha and grass	-0.2555	-0.5907
84	Vegetated wetlands dominated by Typha and grass	-0.0587	-1.1133
85	Vegetated wetlands dominated by Typha and grass	-0.4477	-1.0693
86	Vegetated wetlands dominated by Typha and Acrostichum	0.6010	-0.5579
87	Vegetated wetlands dominated by Typha and grass	-0.1338	-0.3964
88	Open water & grass dominated	-0.3964	1.0952
89	Open water & Acrostichum dominated	0.3006	0.7966
90	Vegetated wetlands dominated by Typha and Acrostichum	0.9212	-0.6656
91	Open water & grass dominated	-0.2990	0.6642
92	Open water & Acrostichum dominated	0.3641	0.3088
93	Open water & Acrostichum dominated	0.6411	0.8623
94	Vegetated wetlands dominated by Typha and Acrostichum	0.1508	-0.0253

Appendix D.2 (Cont)

95	Open water & Acrostichum dominated	0.1162	0.0422
96	Open water & Acrostichum dominated	0.1539	0.2950
97	Open water & grass dominated	-0.0836	1.0439
98	Vegetated wetlands dominated by Typha and Acrostichum	2.1347	-0.6220
99	Vegetated wetlands dominated by Typha and grass	-0.3671	-1.3542
100	Vegetated wetlands dominated by Typha and Acrostichum	0.5534	-1.1701
101	Vegetated wetlands dominated by Typha and grass	-1.4580	-1.1719
102	Vegetated wetlands dominated by Typha and Acrostichum	0.3362	-0.8174
103	Open water & Acrostichum dominated	0.4709	0.4797
104	Vegetated wetlands dominated by Typha and grass	-0.5149	-0.7955
105	Open water & Acrostichum dominated	0.0365	0.4595
106	Open water & grass dominated	-0.7555	0.2671
107	Open water & grass dominated	-1.1041	0.3167
108	Vegetated wetlands dominated by Typha and Acrostichum	0.4583	-0.7360
109	Vegetated wetlands dominated by Typha and Acrostichum	0.3836	-1.3786
110	Vegetated wetlands dominated by Typha and grass	-0.3861	-0.4373
111	Vegetated wetlands dominated by Typha and grass	-0.4188	-0.2251
112	Open water & grass dominated	-1.6970	0.3165
113	Open water & grass dominated	-0.6104	0.8586
114	Open water & Acrostichum dominated	0.6709	0.4286
115	Open water & Acrostichum dominated	0.1832	0.6885
116	Open water & Acrostichum dominated	0.4117	0.3347
117	Open water & Acrostichum dominated	0.4649	0.7471
118	Open water & Acrostichum dominated	0.1014	0.4569
119	Vegetated wetlands dominated by Typha and Acrostichum	0.7429	-0.8519
120	Open water & Acrostichum dominated	1.7371	0.4755
121	Vegetated wetlands dominated by Typha and grass	-0.5452	-0.4304
122	Vegetated wetlands dominated by Typha and grass	-0.7180	-0.2373
123	Open water & grass dominated	-1.0618	0.0991
124	Open water & Acrostichum dominated	1.0295	0.5838
125	Open water & grass dominated	-0.3723	0.3032
126	Open water & grass dominated	-0.2062	0.1047
127	Open water & grass dominated	-0.3361	1.3997
128	Vegetated wetlands dominated by Typha and grass	-2.4864	-0.4273
129	Vegetated wetlands dominated by Typha and grass	-0.1559	-0.0087
130	Vegetated wetlands dominated by Typha and Acrostichum	0.0915	-0.1131
131	Open water & grass dominated	-0.1723	1.1025
132	Open water & grass dominated	-0.4249	0.7387
133	Vegetated wetlands dominated by Typha and grass	-0.3026	-1.1937
134	Open water & grass dominated	-0.7357	0.6577
135	Vegetated wetlands dominated by Typha and grass	-0.2610	-0.4311
136	Vegetated wetlands dominated by Typha and grass	-0.2018	-0.0525
137	Open water & grass dominated	-0.3443	0.5742
138	Open water & grass dominated	-0.4953	0.2823
139	Open water & grass dominated	-0.6750	0.5267
140	Vegetated wetlands dominated by Typha and grass	-0.1344	-0.3406
141	Open water & grass dominated	-0.5378	0.5163
142	Vegetated wetlands dominated by Typha and Acrostichum	0.4746	-0.0090
143	Vegetated wetlands dominated by Typha and grass	-0.3847	-0.0963

Appendix D.2 (Cont)

144	Vegetated wetlands dominated by Typha and grass	-0.0154	-0.7133
145	Open water & Acrostichum dominated	0.4234	0.7134
146	Open water & Acrostichum dominated	0.5883	0.7932
147	Vegetated wetlands dominated by Typha and Acrostichum	0.8480	-0.5958
148	Vegetated wetlands dominated by Typha and Acrostichum	0.2640	-0.2265
151	Vegetated wetlands dominated by Typha and grass	-0.0795	-0.1854
152	Open water & Acrostichum dominated	0.5616	0.8084
153	Vegetated wetlands dominated by Typha and Acrostichum	0.7659	-1.3961
154	Vegetated wetlands dominated by Typha and Acrostichum	0.3603	-1.3863
155	Open water & Acrostichum dominated	0.2716	0.0020
156	Vegetated wetlands dominated by Typha and Acrostichum	0.5787	-0.6343
157	Vegetated wetlands dominated by Typha and grass	0.5002	-0.4321
158	Vegetated wetlands dominated by Typha and grass	-0.0043	-0.0234
159	Open water & Acrostichum dominated	0.1098	0.3094
160	Vegetated wetlands dominated by Typha and Acrostichum	0.4215	-0.6214
161	Vegetated wetlands dominated by Typha and Acrostichum	0.5132	-0.7020
162	Vegetated wetlands dominated by Typha and Acrostichum	0.3350	-0.8970
163	Vegetated wetlands dominated by Typha and Acrostichum	0.4752	-0.6663
164	Vegetated wetlands dominated by Typha and Acrostichum	0.3417	-0.2345
165	Vegetated wetlands dominated by Typha and Acrostichum	0.2783	-0.1408
168	Open water & Acrostichum dominated	0.5109	1.0278
172	Open water & Acrostichum dominated	0.0813	0.5871
177	Vegetated wetlands dominated by Typha and grass	-0.3841	-1.1377
178	Open water & grass dominated	-0.3328	0.4661
179	Open water & Acrostichum dominated	0.4497	0.8398
180	Open water & Acrostichum dominated	0.4645	0.8901
181	Open water & Acrostichum dominated	0.4948	0.8728
182	Open water & Acrostichum dominated	0.4746	0.9032
183	Open water & grass dominated	-0.3046	0.4267
184	Open water & Acrostichum dominated	0.7531	0.5425
185	Open water & Acrostichum dominated	1.0121	0.0982
186	Vegetated wetlands dominated by Typha and Acrostichum	1.0524	-0.0812
187	Open water & Acrostichum dominated	0.7389	0.5821
206	Open water & grass dominated	-0.1021	0.2000
207	Open water & grass dominated	-0.1618	0.5478
208	Vegetated wetlands dominated by Typha and Acrostichum	0.0733	-0.2202
209	Open water & Acrostichum dominated	0.6000	0.8118
210	Vegetated wetlands dominated by Typha and grass	-0.6570	-0.0910
211	Vegetated wetlands dominated by Typha and Acrostichum	0.3863	-0.5335
212	Vegetated wetlands dominated by Typha and Acrostichum	1.5040	-0.0845
213	Open water & Acrostichum dominated	1.5900	0.9234
214	Open water & Acrostichum dominated	0.1671	1.1513
215	Vegetated wetlands dominated by Typha and grass	-0.1112	-0.0885
218	Vegetated wetlands dominated by Typha and grass	-1.3344	-0.3727
219	Vegetated wetlands dominated by Typha and grass	-0.5615	-0.6577
220	Vegetated wetlands dominated by Typha and Acrostichum	1.8252	-0.4463
221	Vegetated wetlands dominated by Typha and Acrostichum	0.5130	-0.3280
222	Open water & Acrostichum dominated	0.4130	0.9800
223	Open water & Acrostichum dominated	0.3120	0.8970

Appendix D.2 (Cont)

224	Open water & Acrostichum dominated	0.6520	0.9160
225	Open water & Acrostichum dominated	0.8720	0.9240
226	Open water & Acrostichum dominated	-0.3238	0.8760
227	Open water & Acrostichum dominated	-0.3120	0.7658
228	Open water & Acrostichum dominated	0.5448	0.7191
229	Open water & Acrostichum dominated	0.5236	0.4217
230	Vegetated wetlands dominated by Typha and Acrostichum	1.0542	-0.0118
231	Open water & Acrostichum dominated	0.8484	0.7704
232	Vegetated wetlands dominated by Typha and Acrostichum	0.6266	-1.3247

Appendix D.3 Pearson correlations between key habitat features and two ordination axes produced by nonmetric multidimensional scaling. Values in bold are statistically significant ($r > 0.256$ $p < 0.01$; $r > 0.324$ $p < 0.001$). The two axes collectively explained about 67% of the total variation in these habitat features.

Feature	X Axis	Y Axis
<i>Paspalum dichum</i>	-0.413	0.065
<i>Paspalidium geminatum</i>	-0.392	-0.372
Water	-0.052	0.679
<i>Mikania micrantha</i>	0.042	-0.337
<i>Typha domingensis</i>	0.057	-0.712
<i>Rhizophora</i>	0.279	0.38
<i>Acrostichum</i>	0.469	0.251

Appendix D.4 Biological Diversity of coastal marshlands

Marshland ID	Native Fauna spp	Endemic Fauna	Migrant Fauna	Native Plants	Terrestrial Plants	Aquatic Plants	Total Diversity
1	2	0	0	9	0	9	11
2	2	0	0	12	4	8	14
3	4	0	0	6	0	6	10
4	2	0	0	7	1	6	9
5	5	0	1	16	6	10	21
6	2	0	0	9	2	7	11
7	9	2	0	11	1	10	20
8	6	2	0	7	0	7	13
9	11	0	0	10	5	5	21
10	5	0	0	7	2	5	12
11	9	2	0	8	3	5	17
12	6	2	0	7	0	7	13
13	4	0	0	13	5	8	17
14	9	1	0	5	4	1	14
15	3	0	0	2	0	2	5
16	2	0	0	3	1	2	5
17	2	0	0	2	0	2	4
18	12	1	0	15	6	9	27
19	3	0	0	6	2	4	9
20	5	0	0	5	3	2	10
21	5	0	0	5	3	2	10
22	9	0	1	15	9	6	24
23	5	0	0	4	1	3	9
24	3	0	0	7	5	2	10
25	8	1	1	9	5	4	17
26	2	0	0	8	3	5	10
27	0	0	0	0	0	0	0
28	13	1	1	16	11	5	29
29	0	0	0	0	0	0	0
30	8	0	0	3	1	2	11
31	0	0	0	13	8	5	13
32	2	0	0	5	4	1	7
33	7	1	0	9	9	0	16
34	9	0	0	7	3	4	16
35	6	0	0	11	6	5	17
36	9	1	0	7	6	1	16
37	1	0	0	11	6	5	12
38	5	0	0	7	3	4	12
39	7	1	0	24	18	6	31
40	4	0	0	15	11	4	19
41	3	0	0	4	2	2	7
42	3	0	0	9	4	5	12
43	4	0	0	11	5	6	15
44	2	0	0	3	3	0	5
45	4	0	0	6	6	0	10
46	12	2	0	13	12	1	25
47	5	0	0	1	1	0	6
48	0	0	0	9	5	4	9
49	2	0	0	5	3	2	7
50	5	0	0	8	8	0	13
51	2	0	0	9	5	4	11
52	4	0	0	2	2	0	6
53	2	0	0	16	9	7	18
54	1	1	0	7	5	2	8
55	3	0	0	10	8	2	13
56	6	1	0	9	8	1	15
57	3	0	0	4	3	1	7
58	2	0	0	7	4	3	9
59	4	0	0	5	5	0	9
60	3	1	0	5	5	0	8
61	4	0	0	5	3	2	9
62	6	3	0	4	2	2	10
63	7	0	0	7	6	1	14
64	4	0	0	11	7	4	15
65	4	0	0	5	3	2	9
66	4	1	0	9	6	3	13
67	4	0	0	11	8	3	15
68	2	0	0	5	4	1	7
69	5	0	0	6	4	2	11
70	3	0	0	12	10	2	15
71	1	0	0	3	3	0	4
72	3	0	0	6	4	2	9

Appendix D.4 (Cont)

73	1	0	0	6	4	2	7
74	1	0	0	3	1	2	4
75	2	0	0	8	7	1	10
76	11	1	3	19	18	1	30
77	11	0	0	10	5	5	21
78	6	0	0	6	4	2	12
79	3	0	0	5	3	2	8
80	12	0	0	5	2	3	17
82	5	0	0	8	3	5	13
81	4	0	0	7	4	3	11
83	0	0	0	3	2	1	3
84	2	0	0	3	2	1	5
85	5	1	0	8	5	3	13
86	4	1	0	7	1	6	11
87	5	0	0	8	3	5	13
88	3	0	0	8	6	2	11
89	5	0	0	9	7	2	14
90	4	0	0	12	9	3	16
91	1	0	0	9	5	4	10
92	3	0	0	9	4	5	12
93	1	0	0	2	0	2	3
94	4	0	0	2	1	1	6
95	4	0	0	15	10	5	19
96	0	0	0	2	1	1	2
97	4	1	0	4	3	1	8
98	4	1	0	4	3	1	8
99	9	1	0	7	6	1	16
100	4	1	0	5	3	2	9
101	2	1	0	4	3	1	6
102	3	0	0	3	0	3	6
103	4	0	0	7	5	2	11
104	2	0	0	6	4	2	8
105	3	1	0	6	4	2	9
106	4	1	0	11	8	3	15
107	11	0	1	14	11	3	25
108	3	0	0	8	6	2	11
109	9	1	0	10	6	4	19
110	3	0	0	2	1	1	5
111	2	0	0	2	1	1	4
112	4	0	0	6	2	4	10
113	2	1	0	5	5	0	7
114	8	0	1	26	13	13	34
115	4	1	0	13	8	5	17
116	1	0	0	7	5	2	8
117	3	1	0	9	7	2	12
118	3	0	0	11	6	5	14
119	1	0	0	5	2	3	6
120	4	0	0	16	8	8	20
121	3	0	0	8	6	2	11
122	3	0	0	14	10	4	17
123	3	0	0	6	3	2	9
124	2	0	0	4	3	1	6
125	4	0	0	16	14	2	20
126	6	1	0	21	18	3	27
127	12	1	0	7	4	3	19
128	4	0	0	7	6	0	11
129	1	0	0	3	2	1	4
130	5	1	0	7	5	2	12
131	2	0	0	2	2	0	4
132	4	0	0	2	2	0	6
133	8	1	0	3	2	1	11
134	9	0	0	4	3	1	13
135	2	0	0	4	2	2	6
136	2	0	0	5	3	2	7
137	5	0	0	4	3	1	9
138	7	0	0	4	1	3	11
139	2	0	0	7	4	3	9
140	4	0	0	4	3	1	8
141	4	0	0	9	4	5	13
142	10	1	0	2	0	2	12
143	3	0	0	3	1	2	6
144	6	0	0	7	2	5	13
145	1	0	0	4	2	2	5
146	13	1	2	29	23	6	42
147	7	0	0	21	15	6	28

Appendix D.4 (Cont)

148	7	2	0	6	3	3	13
151	5	0	0	7	6	1	12
152	13	3	0	12	11	1	25
153	5	0	0	5	2	3	10
154	7	1	0	7	5	2	14
155	13	3	0	17	17	0	30
156	4	1	0	9	5	4	13
157	0	0	0	0	0	0	0
158	7	0	0	9	4	5	16
159	7	1	1	20	15	5	27
160	13	1	0	12	8	4	25
161	1	0	0	4	2	2	5
162	3	0	0	5	3	2	8
163	3	0	0	5	3	2	8
164	6	0	0	5	3	2	11
165	4	0	0	4	3	1	8
168	12	1	0	7	6	1	19
172	8	1	0	5	3	2	13
174	6	0	0	4	3	1	10
177	5	0	0	2	1	1	7
178	6	0	0	5	3	2	11
179	3	0	0	6	4	2	9
180	6	1	0	11	9	2	17
181	5	0	0	11	10	1	16
182	7	1	0	12	11	1	19
183	5	1	0	9	7	2	14
184	3	0	0	8	5	3	11
185	7	1	0	4	3	1	11
186	6	1	0	4	2	2	10
187	5	0	0	9	8	1	14
206	4	0	0	5	3	2	9
207	2	0	0	8	5	3	10
208	2	0	0	10	6	4	12
209	2	0	0	2	2	0	4
210	4	0	0	2	0	2	6
211	2	0	0	4	2	2	6
212	2	0	0	5	3	2	7
213	3	0	0	6	3	3	9
214	8	0	0	7	3	4	15
215	3	0	0	12	7	5	15
218	2	0	0	10	5	5	12
219	2	0	0	4	2	2	6
220	4	0	0	4	2	2	8
221	3	0	0	6	3	3	9
222	1	0	0	1	0	1	2
223	2	0	0	3	2	1	5
224	1	0	0	1	0	1	2
225	2	0	0	4	2	2	6
226	1	0	0	3	1	2	4
227	0	0	0	3	1	2	3
228	8	0	0	14	12	2	22
229	5	0	0	5	4	1	10
230	5	0	0	11	8	3	16
231	5	1	0	15	12	3	20
232	4	0	0	5	2	3	9

Appendix D.5. The endangered and vulnerable plant species and their marshland localities (top column number).

Family	Endangered Species	8	17	39	46	49	58	60	67	70	97	103	106
Lamiaceae	<i>Clerodendrum heterophyllum</i> (Poir.) R. Br.	0	1	1	1	1	0	1	1	1	0	0	1
Ruscaceae	<i>Diacaena concinna</i> Kunth	1	0	0	0	0	1	0	1	0	0	1	0
Fabaceae	<i>Erythrina variegata</i> L.	0	0	0	0	0	0	0	0	0	1	0	0
Araliaceae	<i>Gastonia mauritiana</i> Marais	0	0	0	0	0	0	0	0	0	0	0	0
Rubiaceae	<i>Tarena borbonica</i> (E. G. et A. Henderson)	0	0	0	0	0	0	0	0	0	0	0	0
Meliaceae	<i>Turraea trichophoda</i> (Baillon) Harms	0	0	0	0	0	0	0	0	0	0	0	0
Meliaceae	<i>Turraea oppositifolia</i> (Cav.) Harms	0	0	0	0	0	0	0	0	0	0	0	0
Arecaceae	<i>Latania loddigesii</i> Mart.	0	0	0	0	0	0	0	0	0	0	0	0
Ebenaceae	<i>Diospyros eggeretorum</i> Richardson	0	0	0	0	0	0	0	0	0	0	0	0
Myrtaceae	<i>Eugenia sieberi</i> Guého et A. J. Scott	0	0	0	0	0	0	0	0	0	0	0	0
Myrtaceae	<i>Eugenia hastilis</i> (Blume) Guého et Scott	0	0	0	0	0	0	0	0	0	0	0	0
Phyllanthaceae	<i>Margaritana aromata</i> (Baillon) Fosberg	0	0	0	0	0	0	0	0	0	0	0	0
Family	Vulnerable Species	39	70	72	76	89	92	95	114	120	122	123	126
Asclepiadaceae	<i>Cynanchum staubii</i> Bosser	0	0	0	0	0	0	0	0	0	0	0	0
Ruscaceae	<i>Diacaena reflexa</i> Lam.	1	0	1	0	0	0	0	0	0	0	0	1
Erythroxylaceae	<i>Erythroxylum hypericifolium</i> Lam.	0	0	0	0	0	0	0	0	0	0	0	1
Erythroxylaceae	<i>Erythroxylum sideroxyloides</i> Lam.	0	0	0	0	0	0	0	0	0	0	0	1
Myrtaceae	<i>Eugenia lucida</i> Lam.	1	1	0	0	0	0	0	0	0	0	0	1
Celastraceae	<i>Maytenus pyria</i> (Willenmet) N. Robson	1	0	0	0	0	0	0	0	0	0	1	1
Celastraceae	<i>Cassine orientalis</i> (Jacq.) Kunze	0	0	0	0	0	0	0	0	0	1	0	0
Ochnaceae	<i>Ochna mauritiana</i> Lam.	0	0	0	0	0	0	0	0	0	0	0	1
Rutaceae	<i>Vepria lanceolata</i> (Lam.) G. Don	0	0	0	0	0	0	0	0	0	0	0	1
Rhizophoraceae	<i>Buguiera gymnorhiza</i> (L.) Lam.	0	0	0	0	1	1	1	1	1	0	0	0
Solanaceae	<i>Lycium marseanenense</i> Venter et Scott	0	0	0	1	0	0	0	0	0	0	0	0
Fabaceae	<i>Zornia vaughaniana</i> Mohlenbr.	0	0	0	0	0	0	0	1	0	0	0	0
Vitaceae	<i>Leea guineensis</i> G. Don	0	0	0	0	0	0	0	0	0	0	0	0
Oleaceae	<i>Olea europea</i> L. subsp. <i>africana</i> (Miller)	0	0	0	0	0	0	0	0	0	0	1	0

Appendix D.5 (Cont)

Family	Endangered Species	107	113	117	123	125	126	146	155	168	179	180	181	182	185	213	214	228
Lamiaceae	<i>Clerodendrum heterophyllum</i> (Poirot) R. Br.	1	0	1	1	0	0	0	1	1	0	1	1	0	0	0	0	1
Ruscaceae	<i>Dracaena concinna</i> Kunth	0	1	0	0	1	0	1	0	0	0	0	0	1	0	0	0	0
Fabaceae	<i>Erythrina variegata</i> L.	0	0	0	0	0	0	0	0	0	0	0	0	0	0	0	0	0
Araliaceae	<i>Gastonia mauritiana</i> Marais	0	0	0	0	0	0	1	0	0	0	0	0	0	1	0	0	0
Rubiaceae	<i>Tarenna borbonica</i> (E. G. et A. Henderson)	0	0	0	0	0	0	0	0	0	0	0	0	0	1	0	0	0
Meliaceae	<i>Tournefortia trichophoda</i> (Baillon) Harms	0	0	0	0	0	0	1	0	0	1	0	0	0	0	0	0	0
Meliaceae	<i>Tournefortia oppositifolia</i> (Cav.) Harms	0	0	0	0	0	1	0	0	0	0	0	0	0	0	0	0	0
Arecaceae	<i>Latania loddigesii</i> Mart.	0	0	0	0	0	0	0	0	0	0	0	0	0	0	1	0	0
Ebenaceae	<i>Diospyros egretaria</i> Richardson	0	0	0	0	0	1	0	0	0	0	0	0	0	0	0	0	0
Myrtaceae	<i>Eugenia sieberi</i> Guého et A. J. Scott	0	0	0	0	0	0	0	0	0	0	1	0	0	0	0	0	0
Myrtaceae	<i>Eugenia haslettii</i> (Blume) Guého et Scott	0	0	0	0	0	1	0	0	0	0	0	0	0	0	0	0	0
Phyllanthaceae	<i>Margaritaria anomala</i> (Baillon) Fosberg	0	0	0	0	0	1	0	0	0	0	0	0	0	0	0	0	0
Family	Vulnerable Species	128	141	146	147	155	168	179	180	181	182	185	213	214	228			
Asclepiadaceae	<i>Cynanchum staubii</i> Bosser	0	0	0	0	0	0	0	0	0	0	0	0	0	0	0	0	1
Ruscaceae	<i>Dracaena reflexa</i> Lam.	0	0	0	1	0	0	0	0	0	0	1	0	0	0	0	0	0
Erythroxylaceae	<i>Erythroxylum hypericifolium</i> Lam.	0	0	0	0	1	0	0	0	0	0	0	0	0	0	0	0	0
Erythroxylaceae	<i>Erythroxylum sideroxyloides</i> Lam.	0	0	1	0	0	0	1	1	1	1	1	0	1	0	0	0	0
Myrtaceae	<i>Eugenia lucida</i> Lam.	0	0	1	0	0	0	0	0	0	0	0	0	0	0	0	0	0
Celastraceae	<i>Maytenus pyria</i> (Willenroet) N. Robson	0	0	0	0	0	1	0	0	1	0	0	1	0	0	0	0	0
Celastraceae	<i>Cassine orientalis</i> (Jacq.) Kuntze	0	0	0	1	0	0	0	0	0	0	0	0	0	0	0	0	0
Ochnaceae	<i>Ochna mauritiana</i> Lam.	0	0	0	0	1	0	0	0	0	0	0	0	0	0	0	0	0
Rutaceae	<i>Veprie lanceolata</i> (Lam.) G. Don	0	0	0	0	1	0	0	0	0	0	0	0	0	0	0	0	0
Rhizophoraceae	<i>Bruguiera gymnorhiza</i> (L.) Lam.	0	0	0	0	0	0	0	0	0	0	0	0	0	0	1	1	0
Solanaceae	<i>Lycium marseenense</i> Venter et Scott	0	0	0	0	0	0	0	0	0	0	0	0	0	0	0	0	0
Fabaceae	<i>Zornia vaughaniana</i> Mohlenbr.	0	1	0	0	0	0	0	0	0	0	0	0	0	0	0	0	0
Vitaceae	<i>Leea guineensis</i> G. Don	1	0	0	0	0	0	0	0	0	0	0	0	0	0	0	0	0
Oleaceae	<i>Olea europaea</i> L. subsp. <i>africana</i> (Miller)	0	0	0	0	0	0	0	0	0	0	0	0	0	0	0	0	0

Appendix D.6. The physical characteristics of coastal marshlands

Marshland ID	Soil Code	Salinity Code	Clarity Code	Wetland Cover Variables		
				%Veg	%Water	% Algae
1	2	2	3	100	0	1
2	5	2	3	80	20	1
3	2	1	1	100	0	1
4	2	1	1	95	5	2
5	4	1	3	10	80	2
6	2	1	3	20	80	2
7	2	1	1	95	5	2
8	2	2	1	100	0	2
9	5	1	1	100	0	1
10	5	1	3	85	15	2
11	5	1	2	95	5	2
12	2	2	5	95	5	1
13	2	1	3	50	50	1
14	2	1	1	98	2	1
15	5	2	3	95	5	2
16	2	2	3	95	5	2
17	4	2	3	70	30	2
18	4	2	3	90	10	1
19	5	2	3	80	20	1
20	2	2	3	95	5	1
21	2	2	3	99	1	1
22	5	2	3	25	75	2
23	5	2	3	40	60	1
24	4	2	3	60	30	3
25	7	2	3	80	20	3
26	7	2	3	20	80	1
27	2	2	3	70	30	1
28	2	3	3	95	5	1
29	1	1	1	70	10	2
30	2	1	3	60	40	2
31	2	3	3	40	60	3
31	2	3	3	98	2	1
32	5	2	1	5	95	2
33	5	2	1	70	30	2
34	4	3	5	10	90	2
35	2	2	4	100	0	1
36	5	11	5	30	70	2
37	7	3	5	95	5	2
38	2	3	1	70	30	1
39	2	3	3	85	15	2
40	2	2	3	70	30	3
41	1	3	5	10	90	2
42	2	1	3	80	10	2
43	2	2	3	90	10	1
44	1	2	4	40	60	1
45	1	2	4	40	60	1
46	1	2	4	40	60	1
47	1	2	4	40	60	1
48	1	2	4	40	60	1
49	1	2	4	40	60	1
50	1	2	4	40	60	1
51	1	2	4	40	60	1
52	1	2	4	40	60	1
53	1	2	4	40	60	1
54	1	2	4	40	60	1
55	1	2	4	40	60	1
56	1	2	4	40	60	1
57	1	2	4	40	60	1

Appendix D.6 (Cont)

Marshland ID	Soil Code	Salinity Code	Clarity Code	Wetland Cover Variables		
				%Veg	%Water	% Algae
58	1	2	4	40	60	1
59	1	2	4	40	60	1
60	1	2	4	40	60	1
61	1	2	4	40	60	1
62	1	3	4	40	60	1
63	1	2	4	40	60	1
64	1	2	4	40	60	1
65	1	2	4	40	60	1
66	1	2	4	40	60	1
67	1	2	4	40	60	1
68	1	3	4	40	60	1
69	1	2	4	40	60	1
70	1	3	4	40	60	1
71	1	3	4	40	60	1
72	1	3	4	40	60	1
73	1	2	4	40	60	1
74	1	3	4	40	60	1
75	1	2	4	40	60	1
76	1	2	1	60	40	3
77	2	2	4	20	40	3
78	2	1	4	70	30	2
78	4	2	4	100	0	1
79	1	1	3	90	10	1
80	6	3	3	70	30	1
81	3	2	1	80	20	2
82	3	2	1	60	40	3
83	3	1	2	15	85	1
84	3	1	1	90	10	2
85	3	1	1	95	5	2
86	3	1	1	90	10	1
87	6	2	1	85	15	3
88	6	3	3	10	90	3
89	1	3	4	30	70	1
90	1	1	4	30	70	1
91	1	1	4	30	70	1
92	1	1	4	30	70	1
93	1	3	4	30	70	1
94	1	1	4	30	70	1
95	1	1	4	30	70	1
96	1	1	4	30	70	1
97	1	1	4	30	70	1
98	2	1	1	85	15	1
99	4	1	1	95	5	1
100	4	1	1	90	10	1
101	4	1	1	100	0	1
102	4	1	1	100	0	2
103	1	1	4	30	70	1
104	2	1	3	40	20	1
105	4	1	1	85	15	1
106	3	2	4	80	20	1
107	3	2	5	10	90	2
108	2	1	5	98	2	2
109	5	1	1	100	0	2
110	3	1	4	90	10	1
111	4	1	2	80	15	2
112	4	1	1	80	20	1
113	1	3	5	90	10	1
114	2	2	3	40	60	2
115	3	2	5	20	80	2

Appendix D.6 (Cont)

Marshland ID	Soil Code	Salinity Code	Clarity Code	Wetland Cover Variables		
				%Veg	%Water	% Algae
116	2	1	5	15	85	1
117	1	2	5	10	90	1
118	1	2	5	20	80	1
119	3	2	2	90	10	1
120	1	3	4	90	10	1
121	5	1	5	40	60	1
122	5	1	5	70	30	1
123	5	1	3	80	20	1
124	5	1	2	95	5	3
125	3	1	1	60	40	2
126	3	1	1	40	60	2
127	4	1	2	80	20	1
128	4	1	2	95	5	1
129	2	1	3	20	80	1
130	2	1	3	60	40	1
131	2	1	3	10	90	1
132	2	1	3	10	80	1
133	2	2	1	98	2	2
134	1	1	1	90	10	1
135	1	1	3	80	20	1
136	1	1	3	80	20	1
137	1	1	3	80	20	1
138	1	1	1	70	30	1
139	1	1	1	90	10	1
140	1	1	1	90	10	1
141	1	1	3	50	10	1
142	1	1	3	30	70	3
143	1	1	3	80	20	3
144	1	1	1	95	5	3
146	7	3	5	10	90	2
147	2	2	4	95	5	1
148	1	1	5	80	20	1
149	2	1	5	60	10	1
150	2	1	5	60	40	1
150	2	1	4	98	2	1
151	1	1	1	90	10	2
151	2	1	3	95	5	1
152	1	1	1	5	95	1
153	5	1	1	100	0	1
154	4	1	4	98	2	1
155	1	2	5	60	40	1
156	1	2	4	100	0	1
158	1	2	5	25	75	1
159	1	2	2	15	85	2
162	1	1	3	90	10	2
164	2	2	5	10	90	2
165	1	1	5	95	5	1
165	3	1	5	5	95	1
168	7	3	5	2	98	1
172	1	2	5	70	90	1

Appendix D.6 (Cont)

Marshland ID	Soil Code	Salinity Code	Clarity Code	Wetland Cover Variables		
				%Veg	%Water	% Algae
177	4	1	2	80	10	1
178	6	2	3	30	70	2
179	4	3	1	5	95	3
180	4	3	1	5	95	3
181	4	3	1	70	30	3
182	4	2	5	3	97	3
183	4	2	1	60	40	1
184	2	2	5	10	90	1
185	2	1	5	60	40	1
186	2	1	3	99	1	1
187	2	2	5	60	40	2
206	5	1	5	20	80	2
207	5	1	2	95	5	2
208	5	1	4	60	40	3
209	4	2	1	25	75	1
211	4	2	2	80	20	2
212	4	2	2	95	5	2
213	5	2	5	5	95	1
214	5	2	5	15	85	1
215	5	1	4	60	40	2
228	2	1	4	60	40	2
229	2	1	5	60	40	2
230	2	1	4	98	2	2
231	1	1	1	90	10	2
232	1	1	1	60	40	2

Codes for Ranking of Physical Characteristics

	1	2	3	4	5	6	7
Salinity	0-2%	3-9%	>9%				
Soil	Gley1	10YR	7.5YR	5Y/5YR	2.5YR	Sand	Rock
Clarity	Poor	Fair	Medium	Good	Excellent		
%Algae	0-2%	3-9%	>9%				

APPENDIX E

Wetland Ranking and Categorisation

Appendix E.1. Relative Disturbance

Appendix E.2. Relative Conservation Value

Appendix E. 1 The relative disturbance of wetlands ranked by measures of edge status and adjacent land uses.

Wetland Disturbance Status					
Count	Intact	Good	Medium	Disturbed	Very Disturbed
1	34	23	6	1	164
2	36	31	35	5	2
3	38	31	37	9	3
4	39	33	76	20	4
5	41	34	78	26	7
6	78	81	83	28	8
7	106	82	86	29	10
8	113	88	98	32	11
9	117	99	100	40	12
10	119	118	101	42	12
11	146	120	102	77	14
12	151	152	116	79	15
13	168	153	121	84	16
14	179	206	122	85	17
15	180	207	123	87	18
16	181	208	124	108	19
17	182	214	142	109	21
18	183	215	143	110	22
19	186		148	111	24
20	213		151	112	25
21			155	120	43
22			156	126	44
23			164	127	45
24			184	128	46
25			185	129	47
26			187	131	48
27			211	132	49
28			212	134	50
29			231	135	51
30				136	52
31				137	53
32				138	54
33				139	55
34				140	56
35				147	57
36				154	58
37				158	59
38				159	60
39				165	61
40				178	62
41				209	63
42				232	64
43					65
44					66
45					67
46					68
47					69
48					70
49					71
50					72
51					73
52					74
53					75
54					80
55					89
56					90
57					91
58					92
59					93
60					94
61					95
62					96
63					97
64					103
65					104
66					105
67					107
68					114
69					115
70					125
71					130
72					133
73					144
74					162
75					233
76					234
77					235
78					236
79					237

Appendix E. 2 The relative conservation value of coastal marshlands. A key to the weighted ranking model is located at end of table.

Marshland Final No.	Conservation Status	Fauna Diversity	Flora Diversity	Total Diversity	Edge Integrity	Area rank	Total Conservation	Wetland Type
1		1	5	10	5	1	22	3
2		1	5	10	1	1	18	3
3		5	5	10	1	1	22	3
4		1	5	5	1	1	13	3
5		5	10	15	5	1	36	1
6		1	5	10	10	1	27	1
7		10	5	15	1	5	36	3
8	20	5	5	10	1	1	42	3
9		10	5	15	5	1	36	3
10		5	5	10	1	5	26	3
11		10	5	10	1	5	31	4
12		5	5	10	1	5	26	3
13		5	10	10	1	1	27	4
14		10	5	10	1	1	27	3
15		1	1	5	1	1	9	4
16		1	1	5	1	1	9	3
17	20	1	1	5	1	1	29	3
18		10	10	15	1	5	41	3
19		1	5	5	1	1	13	4
20		5	5	10	5	1	26	3
21		5	5	10	1	1	22	3
22		10	10	15	1	10	46	3
23		5	5	5	12	1	28	3
24		1	5	10	1	10	27	1
25		5	5	10	1	1	22	4
26		1	5	10	5	1	22	1
27		1	5	5	M	1	12	1
28		10	10	15	5	5	45	3
29		1	1	5	5	1	13	4
30		5	1	10	12	1	29	1
31		1	10	10	12	1	34	1
32		1	5	5	5	1	17	3
33		5	5	10	12	1	33	1
34		10	5	10	12	1	38	1
35		5	10	10	10	5	40	4
36		10	5	10	15	1	41	2
37		1	5	10	10	1	27	2
38		5	10	10	M	1	26	3
39	25	5	10	15	15	5	75	4
40		5	10	10	5	1	31	4
41		1	1	5	15	5	27	1
42		1	5	10	5	10	31	4
43		5	5	10	1	5	26	4
44		1	1	5	1	1	9	1
45		5	5	10	1	1	22	1
46	20	5	10	10	1	5	51	2
47		5	1	5	1	1	13	2
48		1	5	5	1	1	13	1
49	20	5	10	10	1	5	51	4
50		5	5	10	1	1	22	1
51		1	5	10	1	1	18	2
52		5	1	5	1	1	13	1
53		1	10	10	1	1	23	4
54		1	5	5	1	1	13	2
55		1	5	10	1	1	18	2
56		5	5	10	1	5	26	2

Appendix E.2 (Cont)

Marshland Final No.	Conservation Status	Fauna Diversity	Flora Diversity	Total Diversity	Edge Integrity	Area rank	Total Conservation	Wetland Type
57		M	5	5	1	1	12	1
58	20	1	5	5	1	1	33	4
59		5	5	5	1	1	17	1
60	20	1	5	5	1	1	33	2
61		5	5	5	1	1	17	4
62		5	5	10	1	1	22	2
63		5	5	10	1	1	22	2
64		5	5	10	1	1	22	1
65		5	5	5	1	5	21	1
66		5	5	10	1	1	22	1
67	20	5	5	10	1	1	42	1
68		1	5	5	1	1	13	2
69		5	5	10	1	1	22	2
70	20	1	5	10	1	1	38	2
71		1	1	5	1	1	9	2
72	10	1	5	5	1	1	23	2
73		1	5	5	1	1	13	1
74		1	1	5	1	1	9	2
75		1	5	10	1	1	18	4
76	15	10	10	15	10	5	65	1
77		10	5	15	5	5	40	2
78		5	5	10	15	1	36	3
79		1	5	5	5	5	21	4
80		10	5	10	1	5	31	4
81		5	5	10	12	5	37	3
82		5	5	10	12	1	33	1
83		1	1	5	10	1	18	3
84		1	1	5	5	5	17	3
85		5	5	10	5	1	26	3
86		5	5	10	10	1	31	4
87		5	5	10	5	5	30	3
88		1	5	10	12	M	28	1
89	10	5	5	10	1	5	36	2
90		5	5	10	1	1	22	4
91		1	5	10	1	1	18	1
92	10	1	5	10	1	1	28	2
93		1	1	5	1	1	9	2
94		5	1	5	1	1	13	4
95	10	5	10	10	1	1	37	2
96		M	1	5	1	5	12	2
97	25	5	5	5	1	1	42	1
98		5	5	5	10	5	30	4
99		10	5	10	12	1	38	3
100		5	5	5	10	1	26	4
101		1	5	5	10	1	22	3
102		1	1	5	10	5	22	4
103	20	5	5	10	1	5	46	2
104		1	5	5	1	1	13	3
105		1	5	5	1	10	22	2
106	20	5	5	10	15	1	56	1
107	20	10	10	15	1	5	61	1
108		1	5	10	5	1	22	4
109		10	5	10	5	1	31	4
110		1	1	5	5	1	13	3
111		1	5	5	5	5	21	3
112		5	5	10	5	5	30	1
113	20	1	5	5	15	1	47	1
114	10	10	10	15	1	10	56	2
115		5	10	10	1	10	36	2

Appendix E.2 (Cont)

Marshland Final No.	Conservation Status	Fauna Diversity	Flora Diversity	Total Diversity	Edge Integrity	Area rank	Total Conservation	Wetland Type
116		1	5	5	10	1	22	2
117	20	1	5	10	15	5	56	2
118		1	5	10	12	5	33	2
119		1	5	5	15	1	27	4
120	10	5	10	15	12	5	57	2
121		1	5	10	10	5	31	3
122	10	1	10	10	10	M	41	3
123	20	1	5	5	10	5	46	1
124		1	1	5	10	1	18	2
125		1	10	15	1	5	32	1
126	25	5	10	15	5	1	61	1
127		10	5	10	5	1	31	1
128	15	5	5	10	5	1	41	3
129		1	1	5	5	1	13	3
130		5	5	10	1	1	22	4
131		1	1	5	5	1	13	1
132		5	1	5	5	1	17	1
133		5	1	10	1	1	18	3
134		10	5	10	5	5	35	1
135		1	5	5	5	5	21	3
136		1	5	5	5	5	21	3
137		5	5	5	5	5	25	1
138		5	5	10	5	1	26	1
139		1	5	5	5	5	21	1
140		5	5	5	5	5	25	3
141	10	5	5	10	M	5	35	1
142		10	1	10	10	1	32	4
143		1	1	5	10	1	18	3
144		5	5	10	1	1	22	3
145		1	5	5	M	5	16	2
146	25	10	10	15	15	5	80	2
147	10	5	10	15	5	5	50	4
148		5	5	10	10	5	35	4
151		5	5	10	15	5	40	3
152		10	5	15	12	5	47	2
153		5	5	10	12	1	33	4
154		5	5	10	M	5	25	4
155	25	10	10	15	10	5	75	2
156		5	5	10	10	5	35	4
157		1	1	5	M	1	8	3
158		5	5	10	5	5	30	2
159		5	10	15	5	10	45	2
160		10	5	15	M	5	35	4
161		1	5	5	M	1	12	4
162		1	5	5	1	5	17	4
163		1	5	5	M	5	16	4
164		5	5	5	10	10	35	4
165		5	5	5	5	5	25	4
168	20	10	5	10	15	5	65	2
172		5	5	10	M	5	25	2
174		5	5	5	M	5	20	2
177		5	1	5	M	1	12	1
178		5	5	5	5	10	30	2
179	10	1	5	5	15	1	37	2
180	10	5	5	10	15	1	46	2

Appendix E.2 (Cont)

Marshland Final No.	Conservation Status	Fauna Diversity	Flora Diversity	Total Diversity	Edge Integrity	Area rank	Total Conservation	Wetland Type
181	10	5	5	10	15	1	46	2
182	10	5	5	10	15	1	46	1
183		5	5	10	15	1	36	2
184	20	1	5	10	10	5	51	2
185	10	5	5	10	10	1	41	4
186		5	5	10	15	5	40	2
187		5	5	10	10	1	31	1
206		5	5	5	12	1	28	1
207		1	5	10	12	1	29	4
208		1	5	10	12	1	29	2
209	25	1	1	5	5	M	37	2
210		1	1	5	M	1	8	4
211		1	5	5	10	5	26	4
212		1	5	5	10	1	22	2
213	10	1	5	5	15	5	41	2
214	10	5	5	10	12	1	43	2
215		1	10	10	12	1	34	3
218		1	10	10	M	10	31	3
219		1	5	5	M	M	11	4
220		1	5	5	M	1	12	4
221		1	5	5	M	1	12	4
222		1	1	5	M	1	8	2
223	25	1	1	5	M	1	33	2
224		1	1	5	M	1	8	2
225		1	5	5	M	1	12	2
226		1	1	5	M	1	8	2
227		1	1	5	M	1	8	2
228	15	10	10	15	M	5	55	2
229		5	5	10	M	5	25	2
230		5	10	10	M	1	26	4
231		5	10	15	10	5	45	2
232		5	5	5	5	5	25	4
233		1	5	5	1	5	17	
234		1	5	5	1	1	13	
235		1	1	5	1	1	9	
236		1	1	5	1	1	9	
237		1	1	5	1	1	9	

KEY to E.2		Ranking Weight
Category		
Conservation	Endangered (1site)	25
Status	Endangered	20
	Vulnerable (1 site)	15
	Vulnerable	10
Fauna	High fauna >8 spp	10
Diversity	Moderate fauna 4-8 spp	5
	Low fauna 1-3 spp	1
Flora	High flora >12 spp	10
Diversity	Moderate flora 5-12 spp	5
	Low flora 1-4 spp	1
Total	Low biodiversity 1-10 spp	5
Diversity	Moderate biodiversity 10-19 spp	10
	High biodiversity >19 spp	15
Edge	Intact	15
Integrity	Good	12
	Medium	10
	Disturbed	5
	Very disturbed	1
Area	Area large > 9.9 ha	10
Rank	Area medium 1-9.9 ha	5
	Area small <1 ha	1
Wetland Type	Wetland Types are categorical variables from Appendix D.2	

APPENDIX F

Wetland Maps and Property Ownership Tables